

# Cherbourg Aboriginal Shire Council Planning Scheme



QUEENSLAND  
GOVERNMENT



# Contents

<b>Part 1</b>	<b>About the planning scheme .....</b>	<b>11</b>
1.1	Introduction .....	11
1.2	Interpretation .....	13
1.2.1	Definitions .....	13
1.2.2	Standard drawings, maps, notes, editor's notes and footnotes .....	13
1.2.3	Punctuation .....	13
1.2.4	Schedules and appendices .....	13
1.2.5	Zones for roads, waterways and reclaimed land .....	13
1.3	Planning scheme elements .....	14
1.4	Levels of assessment for development .....	14
1.5	Rules for determining the level of assessment .....	15
1.6	Rules for determining the assessment criteria .....	15
1.7	Building work regulated under the planning scheme .....	17
<b>Part 2</b>	<b>State planning provisions .....</b>	<b>18</b>
2.1	Regional plan .....	18
2.2	State planning policies .....	18
2.3	Referral agency delegations .....	18
2.4	Standard planning scheme provisions .....	19
<b>Part 3</b>	<b>Strategic framework .....</b>	<b>20</b>
3.1	Preliminary .....	20
3.2	Strategic intent .....	21
3.3	Our people .....	25
3.3.1	Strategic outcomes .....	27
3.3.2	Element – Healthy and Active People .....	28
3.3.3	Element – Cherbourg's Heritage .....	29
3.3.4	Element – Community Facilities .....	30
3.3.5	Element – Sporting and Recreation Facilities .....	31
3.3.6	Element – Safety and Access .....	32
3.4	How we use our land .....	33
3.4.1	Strategic outcomes .....	33
3.4.2	Element – Urban Areas .....	35
3.4.3	Element – Natural Hazards .....	36
3.4.4	Element – Business Activities .....	36
3.4.5	Element – Residential Development .....	37
3.4.6	Element – Regional Farming Areas .....	40
3.4.7	Element – Industrial Development .....	41
3.5	Looking after country .....	42
3.5.1	Strategic outcomes .....	42
3.5.2	Element – Areas of Ecological Significance .....	43
3.5.3	Element – Waterways, Wetlands and Water Quality .....	45
3.5.4	Element – Pests and Weeds .....	45
3.5.5	Element – Air, Noise and Odour Emissions .....	46
3.5.6	Element – Scenic Quality .....	46
3.6	Strong economy .....	47
3.6.1	Strategic outcomes .....	47
3.6.2	Element – New and Expanding Enterprises .....	48
3.6.3	Element – Business, Rural and Industry Enterprises .....	48
3.6.4	Element – Tourism Activities .....	49
3.6.5	Element – Training and Education .....	50
3.7	Town infrastructure and services .....	51
3.7.1	Strategic outcomes .....	51
3.7.2	Element – Town Infrastructure and Transport Infrastructure .....	52
3.7.3	Element – Town Services and Development Sequencing .....	53

<b>Part 4</b>	<b>Priority infrastructure plan.....</b>	<b>54</b>
4.1	Preliminary.....	54
4.2	Planning assumptions .....	54
4.3	Priority infrastructure area .....	55
4.4	Desired standards of service .....	55
4.4.1	Water supply network desired standards of service .....	55
4.4.2	Sewage network desired standards of service .....	56
4.4.3	Stormwater network desired standards of service .....	57
4.4.4	Transport network desired standards of service .....	58
4.4.5	Public parks and land for community facilities network desired standards of service .....	58
4.5	Plans for trunk infrastructure .....	59
4.5.1	Trunk infrastructure networks, systems and items.....	59
4.6	Extrinsic material .....	60
<b>Part 5</b>	<b>Tables of assessment.....</b>	<b>61</b>
5.1	Preliminary.....	61
5.2	Reading the tables.....	61
5.3	Determining the level of assessment .....	62
5.4	Prescribed levels of assessment.....	62
5.5	Levels of assessment – Material change of use .....	64
5.6	Levels of assessment – Local plans.....	73
5.7	Levels of assessment – Reconfiguring a lot.....	73
5.8	Levels of assessment – Building work .....	74
5.9	Levels of assessment – Operational work.....	78
<b>Part 6</b>	<b>Zones.....</b>	<b>79</b>
6.1	Preliminary.....	79
6.2	Zone codes.....	80
<b>Part 7</b>	<b>Local plans .....</b>	<b>94</b>
<b>Part 8</b>	<b>Overlays .....</b>	<b>95</b>
<b>Part 9</b>	<b>Development codes .....</b>	<b>96</b>
9.1	Preliminary.....	96
9.2	Statewide codes .....	96
9.2.1	Reconfiguring a lot (subdividing one lot into two lots) and associated operational work code .....	96
9.2.2	Community residence code.....	99
9.2.3	Forestry for wood production code.....	99
9.3	Use codes.....	99
9.3.1	Accommodation activities code.....	99
9.3.2	Business activities code .....	105
9.3.3	Industry activities code.....	110
9.3.4	Rural activities code .....	114
9.3.5	Reconfiguration of a lot (subdivision) code .....	118
9.4	Other development codes .....	122
9.4.1	Town infrastructure and services code .....	122
9.4.2	Natural hazards code .....	124
9.4.3	Looking after country code.....	131
<b>Part 10</b>	<b>Planning partnerships .....</b>	<b>139</b>

<b>Schedule 1 Definitions</b> .....	<b>140</b>
SC1.1 Use definitions.....	140
SC1.1.1 Defined activity groups.....	164
SC1.2 Administrative definitions.....	166
<b>Schedule 2 Mapping</b> .....	<b>172</b>
SC2.1 Map index.....	172
SC2.2 Strategic plan maps.....	173
SC2.3 Zone maps .....	179
<b>Schedule 3 Priority infrastructure plan mapping and plans</b> .....	<b>181</b>
SC3.1 Map index.....	181
SC3.2 Priority infrastructure plan maps.....	182
<b>Schedule 4 Notifications required under the <i>Sustainable Planning Act 2009</i></b> .....	<b>187</b>
SC4.1 Notation of decisions affecting the planning scheme under section 391 of the Act.....	187
<b>Schedule 5 Land designated for community infrastructure</b> .....	<b>188</b>
<b>Schedule 6 Planning scheme policies</b> .....	<b>189</b>
SC6.1 Heritage Buildings Planning Scheme Policy .....	189
SC6.2 Schedule of Pest Plants (weeds) Planning Scheme Policy.....	190
SC6.3 The Cherbourg Community Have a Say Planning Scheme Policy.....	191
SC6.4 The Farm Preferred Concept Plan Planning Scheme Policy .....	192
<b>Appendix 1 Index and glossary of abbreviations and acronyms</b> .....	<b>197</b>
<b>Appendix 2 Table of amendments</b> .....	<b>198</b>



# About the planning scheme

Part 1

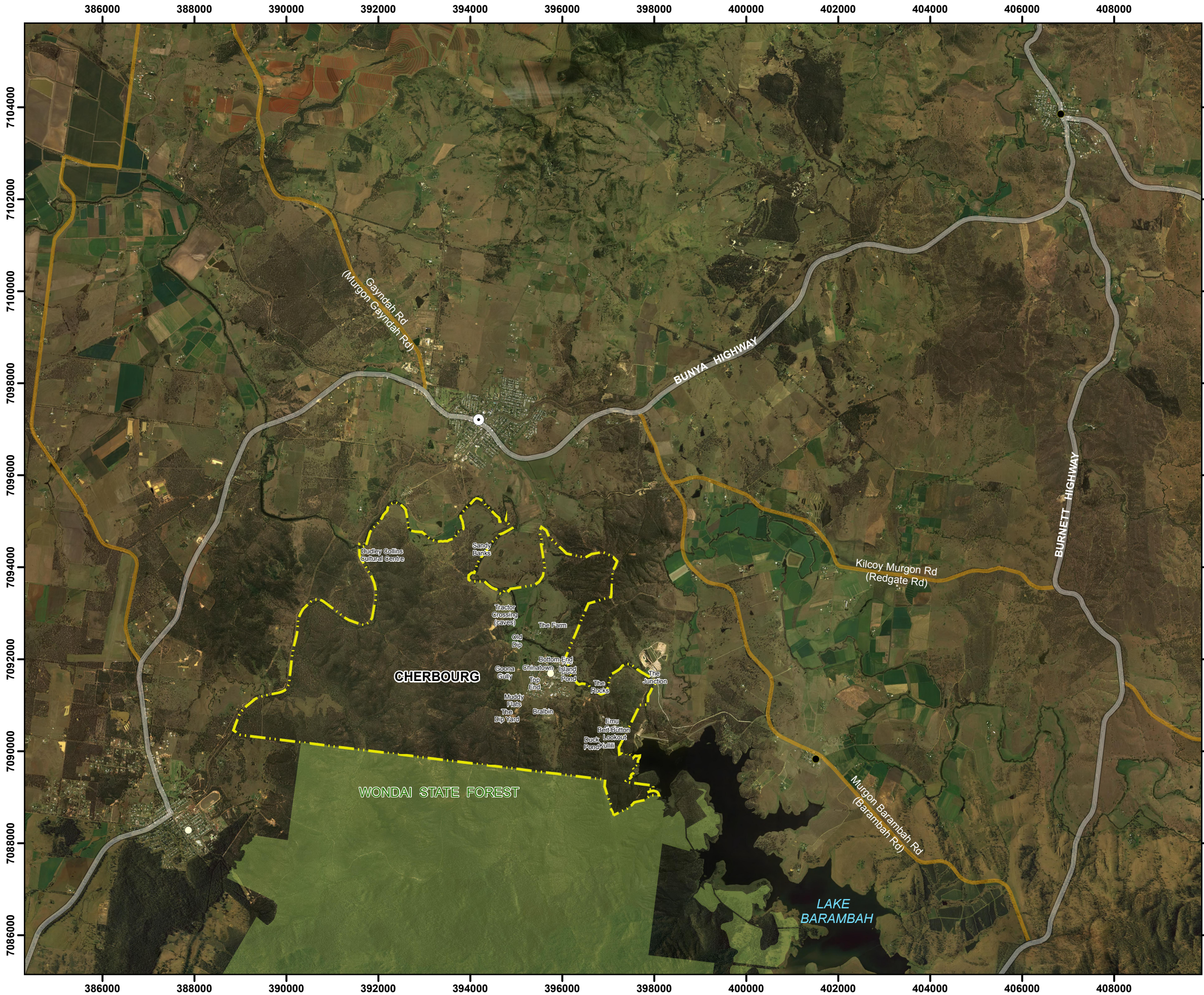


QUEENSLAND  
GOVERNMENT



**AECOM**





## Cherbourg Shire Council

### Local Govenment Planning Scheme Area

### Local Govenment Context Map

#### Legend

- Highway
- Major Road
- Local Government Boundary
- State Forest

Updated: 13/03/2013

Data sources: (c) Department of Infrastructure and Planning, November 2010;  
(c) ESRI World Imagery 2011; (c) DERM, 2011;  
StreetPro (c)2010 Pitney Bowes Business Insight, PSMA

AECOM does not warrant the accuracy or completeness of  
information displayed in this map and any person using it does  
so at their own risk. AECOM shall bear no responsibility or liability  
for any errors, faults, defects, or omissions in the information.

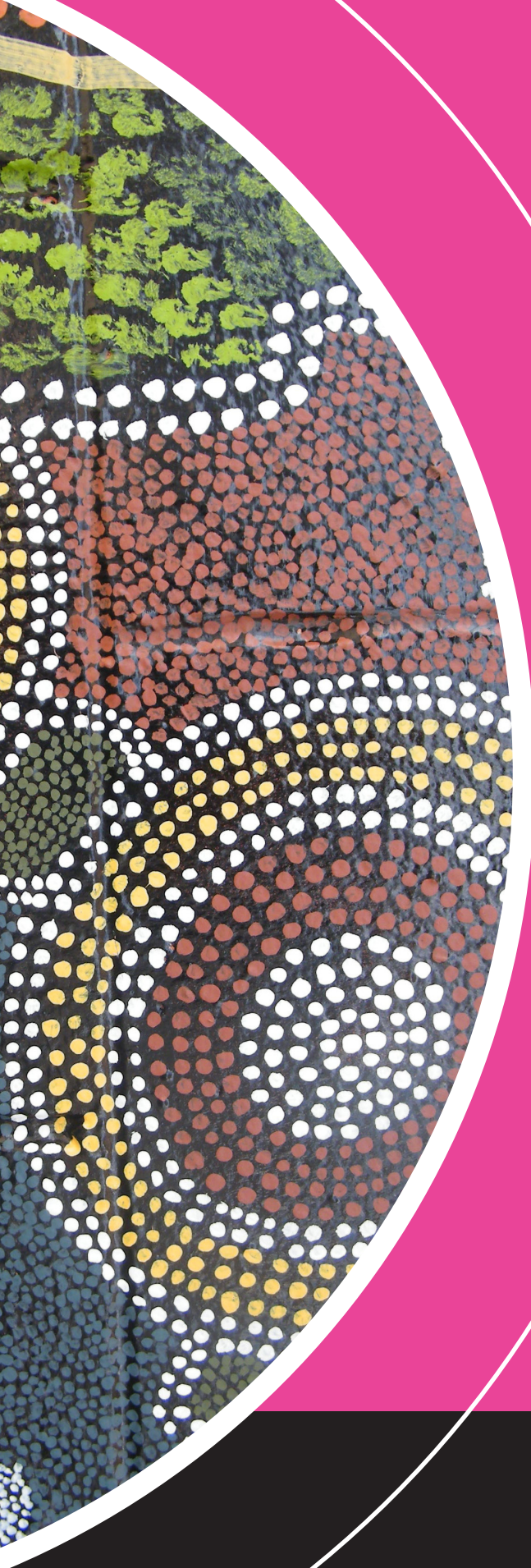
Special Note: Watercourses are based on DERM data however  
the information has been adjusted to align with other more accurate  
data. Watercourses should be considered indicative only.

Approx Scale @ A3 1:80,000



### Local Government Context Map 2 and 3





# Mapping

## Schedule 2



QUEENSLAND  
GOVERNMENT



## Schedule 2 Mapping

**Editor's Notes:**

Mapping for the PIP is contained within **Schedule 3** of the planning scheme.

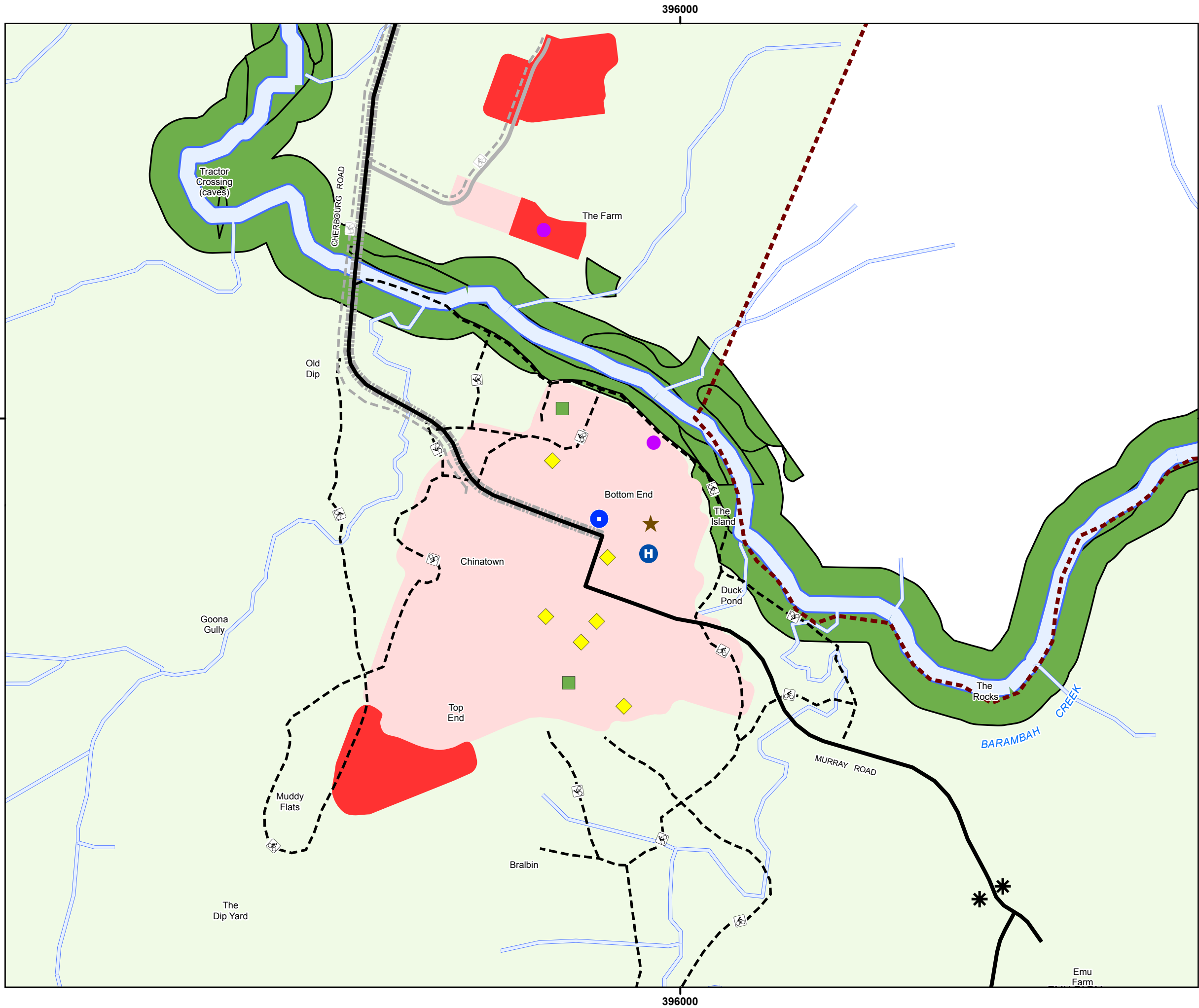
### SC2.1 Map index

The table below lists all strategic plan and zoning maps applicable to the planning scheme area.

**Table SC2.1.1 – Map index**

Map number	Map title	Gazettal date
<b>Strategic plan maps</b>		
Map SFM-001a	How We Use Our Land	13 <sup>th</sup> September 2013
Map SFM-001b	How We Use Our Land	13 <sup>th</sup> September 2013
Map SFM-002	Looking After Country	13 <sup>th</sup> September 2013
Map SFM-003a	Natural Hazards	13 <sup>th</sup> September 2013
Map SFM-003b	Natural Hazards	13 <sup>th</sup> September 2013
Map SFM-004	Places of Historical Importance	13 <sup>th</sup> September 2013
<b>Zone maps</b>		
Map ZM-001a	Zoning Plan	13 <sup>th</sup> September 2013
Map ZM-001b	Zoning Plan	13 <sup>th</sup> September 2013

Cherbourg Shire  
Strategic Plan  
Map



Legend

Contextual information

- Cherbourg Local Government Area
- Urban Area (existing)
- Major Road Network
- Informal Walking Tracks (existing)

Settlement pattern

- New Urban Area
- Regional Farming Areas
- Centre
- Investigation area

Natural environment

- Waterway
- Nature conservation

Community Identity and diversity

- Major Community Facility
- Major Sport & Recreation

Future access and mobility

- Future Public Transport Corridor
- Future Cycling and Walking Route
- Future Major Road Network

Infrastructure and services

- Major Infrastructure

Economic development

- Industrial Development
- Helipad
- Historical Precinct
- Future Tourism and Recreation

Updated: 13/03/2013

Data sources: (c) Department of Infrastructure and Planning, November 2010

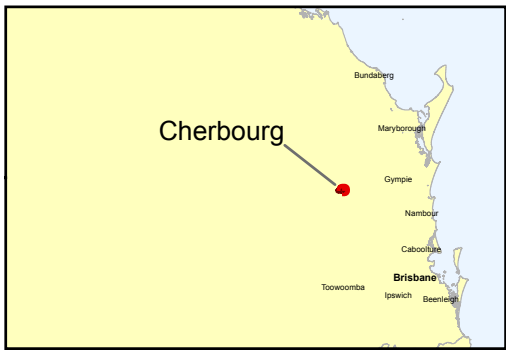
AECOM does not warrant the accuracy or completeness of information displayed in this map and any person using it does so at their own risk. AECOM shall bear no responsibility or liability for any errors, faults, defects, or omissions in the information.

Special Note: Watercourses are based on DERM data however the information has been adjusted to align with other more accurate data. Watercourses should be considered indicative only.

Approx Scale @ A3 1:10,000

0 250 500

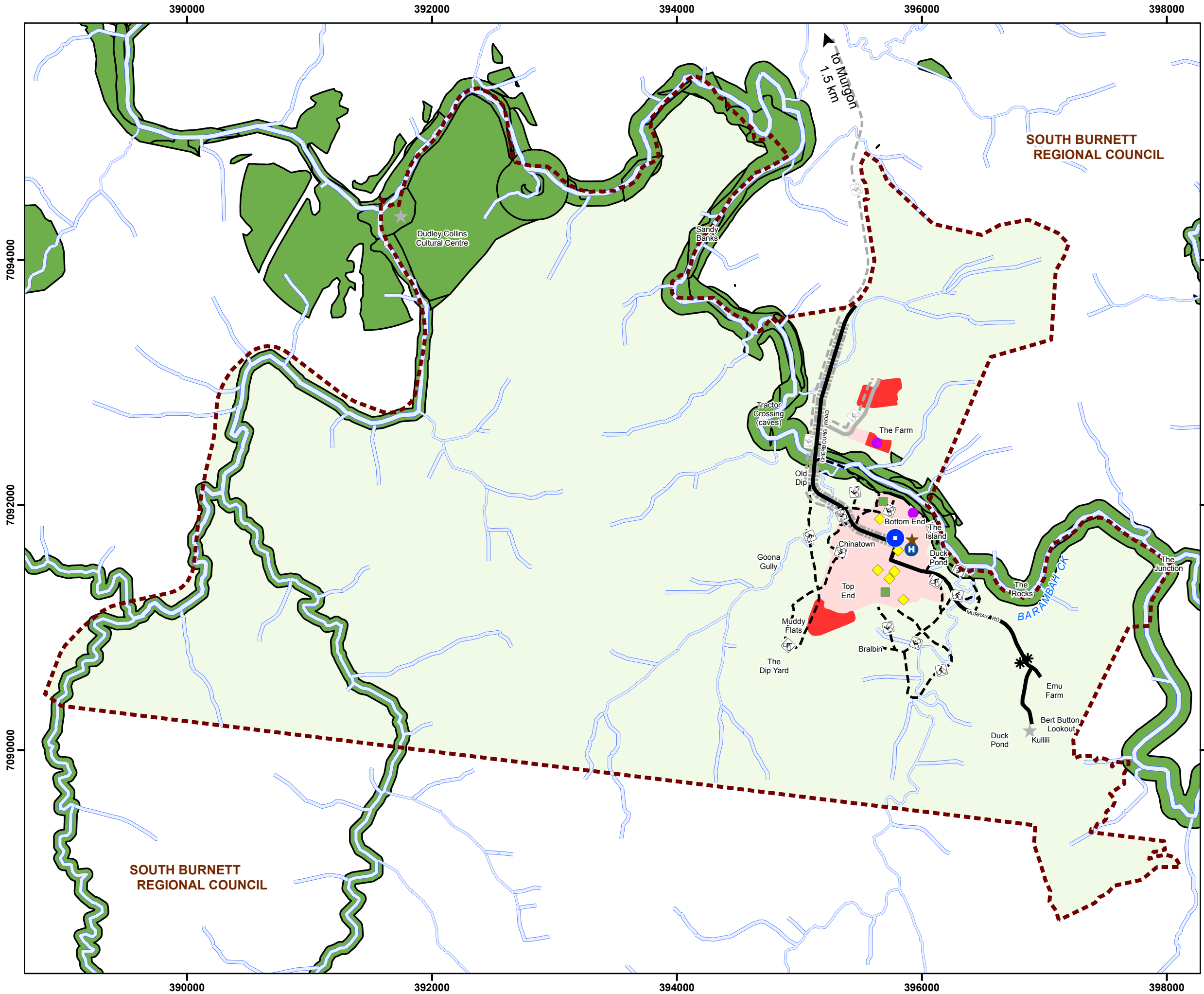
Metres



How We Use Our Land  
Map SFM-001a



Cherbourg Shire  
Strategic Plan  
Map



Legend

Contextual information

- Cherbourg Local Government Area
- Urban Area (existing)
- Major Road Network
- Informal Walking Tracks (existing)

Settlement pattern

- New Urban Area
- Regional Farming Areas
- Centre

Natural environment

- Waterway
- Nature conservation

Community Identity and diversity

- Major Community Facility
- Major Sport & Recreation

Future access and mobility

- Future Public Transport Corridor
- Future Cycling and Walking Route
- Future Major Road Network

Infrastructure and services

- Major Infrastructure

Economic development

- Industrial Development
- Helipad
- Historical Precinct
- Future Tourism and Recreation

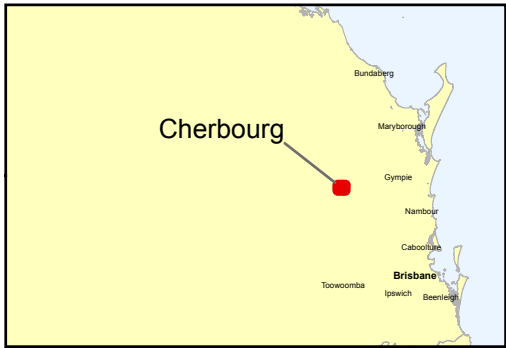
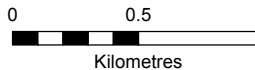
Created: 20/08/2012

Data sources: (c) Department of Infrastructure and Planning, November 2010

AECOM does not warrant the accuracy or completeness of information displayed in this map and any person using it does so at their own risk. AECOM shall bear no responsibility or liability for any errors, faults, defects, or omissions in the information.

Special Note: Watercourses are based on DERM data however the information has been adjusted to align with other more accurate data. Watercourses should be considered indicative only.

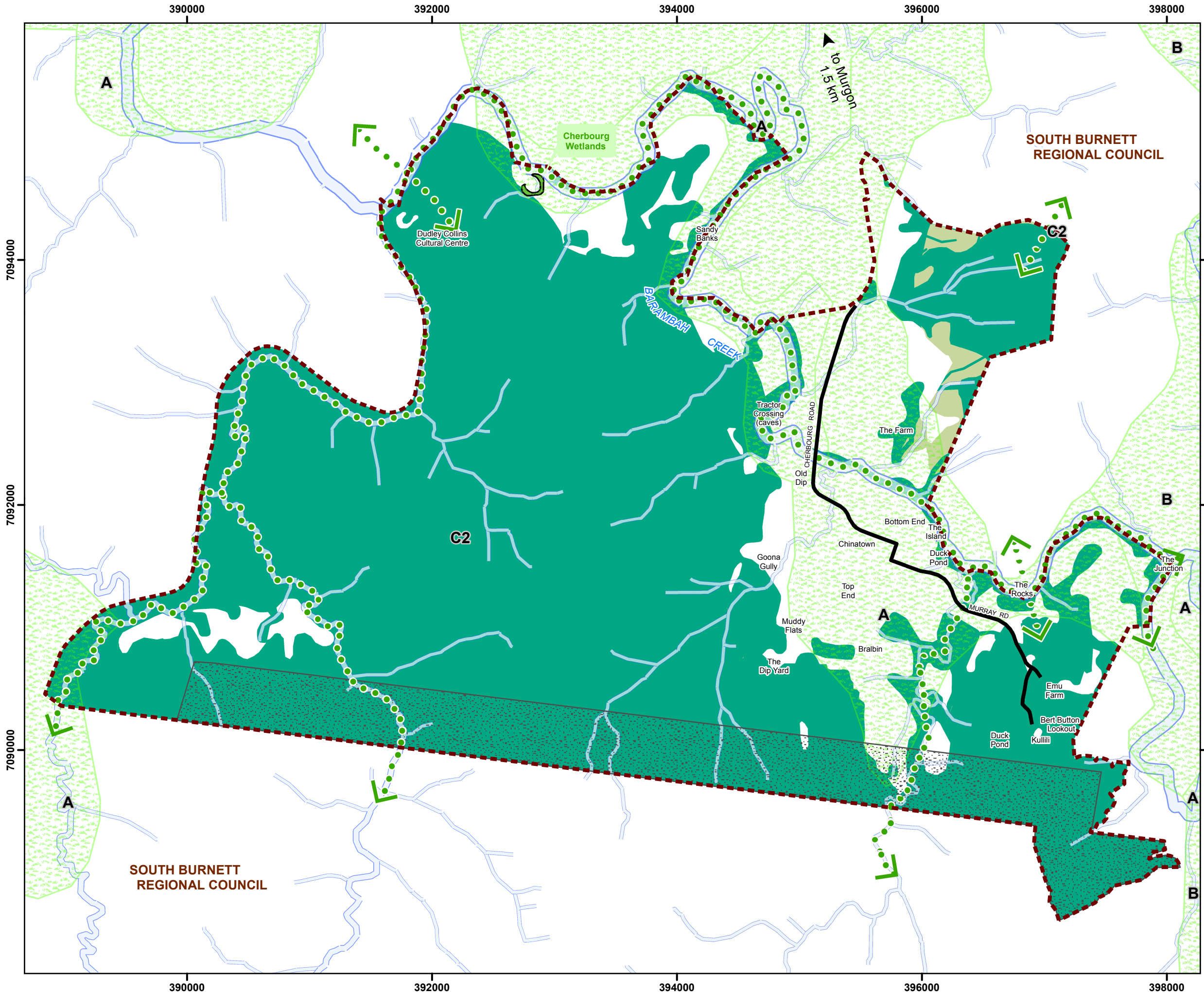
Approx Scale @ A3 1:30,000



How We Use Our Land  
Map SFM-001b



Cherbourg Shire  
Strategic Plan  
Map



Legend

Contextual information

Cherbourg Local Government Area

Major Road Network

Waterway

Environment and Nature Resource Value

Areas of High Ecological Significance

Areas of General Ecological Significance

Natural Corridors

Buffer to Wondai State Forest

Good Quality Agricultural Land  
(combined Classes A and B)

Updated: 13/03/2013

Data sources: (c) Department of Infrastructure and Planning, November 2010

AECOM does not warrant the accuracy or completeness of information displayed in this map and any person using it does so at their own risk. AECOM shall bear no responsibility or liability for any errors, faults, defects, or omissions in the information.

Special Note: Watercourses are based on DERM data however the information has been adjusted to align with other more accurate data. Watercourses should be considered indicative only.

Good Quality Agricultural Land is based on the DNRML Soil Project Code ABS, Land Resources of the South Burnett Region, Job No. 91-093.

Approx Scale @ A3 1:30,000

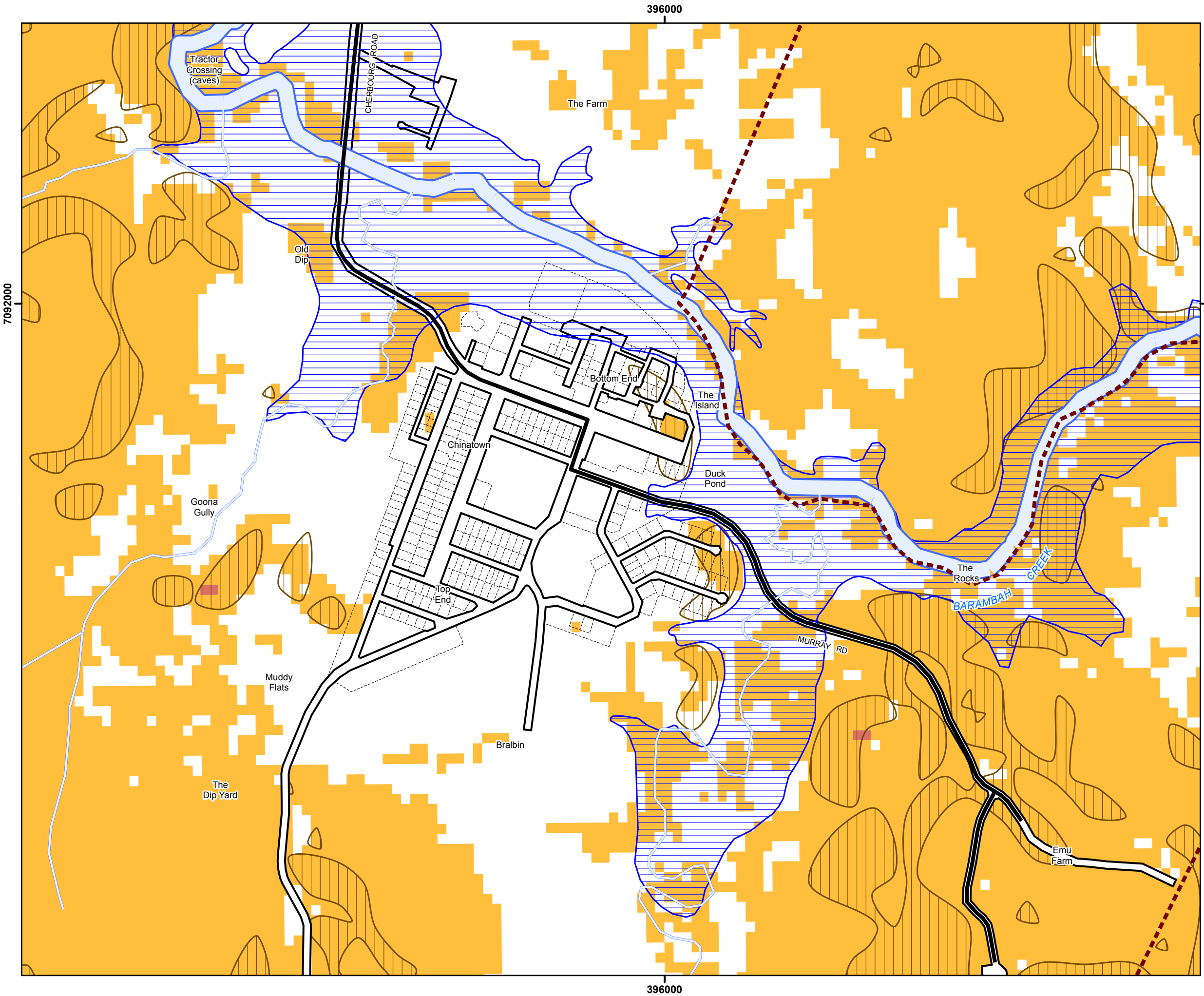
0 0.5 1

Kilometres





Cherbourg Shire  
Strategic Plan  
Map



**Legend**

**Contextual information**

Cherbourg Local Government Area

Major Road Network

Surveyed Roads

Waterway

**Natural Hazards**

Flood Hazard

**Landslide**

Landslide Hazard (slope 15% and over)

**Bushfire Hazard**

Bushfire Hazard - High

Bushfire Hazard - Medium

Updated: 13/03/2013

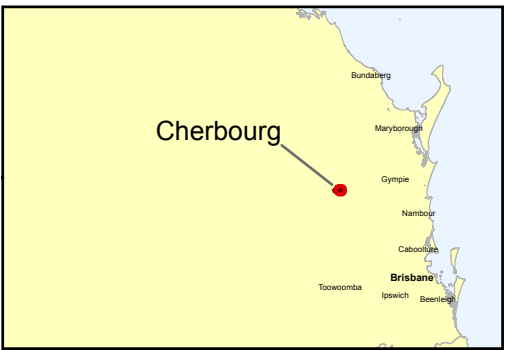
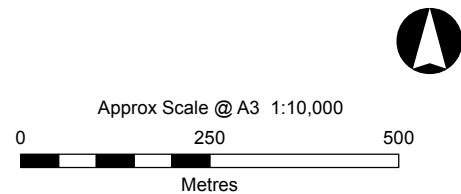
Data sources: (c) Department of Infrastructure and Planning, November 2010;  
(c) Emergency Services Queensland 2006; (c) Department of Natural Resources  
and Mines, 2012

AECOM does not warrant the accuracy or completeness of  
information displayed in this map and any person using it does  
so at their own risk. AECOM shall bear no responsibility or liability  
for any errors, faults, defects, or omissions in the information.

Bushfire Risk analysis data was supplied by the Rural Fire Service  
Division of Queensland Fire & Rescue Service. This data is to be used as  
a guide only for planning purposes. While every care is taken to ensure  
the accuracy of this data, the Department of Emergency Services makes no  
representations or Warranties about its accuracy, reliability completeness  
or suitability and disclaims all responsibility and liability.

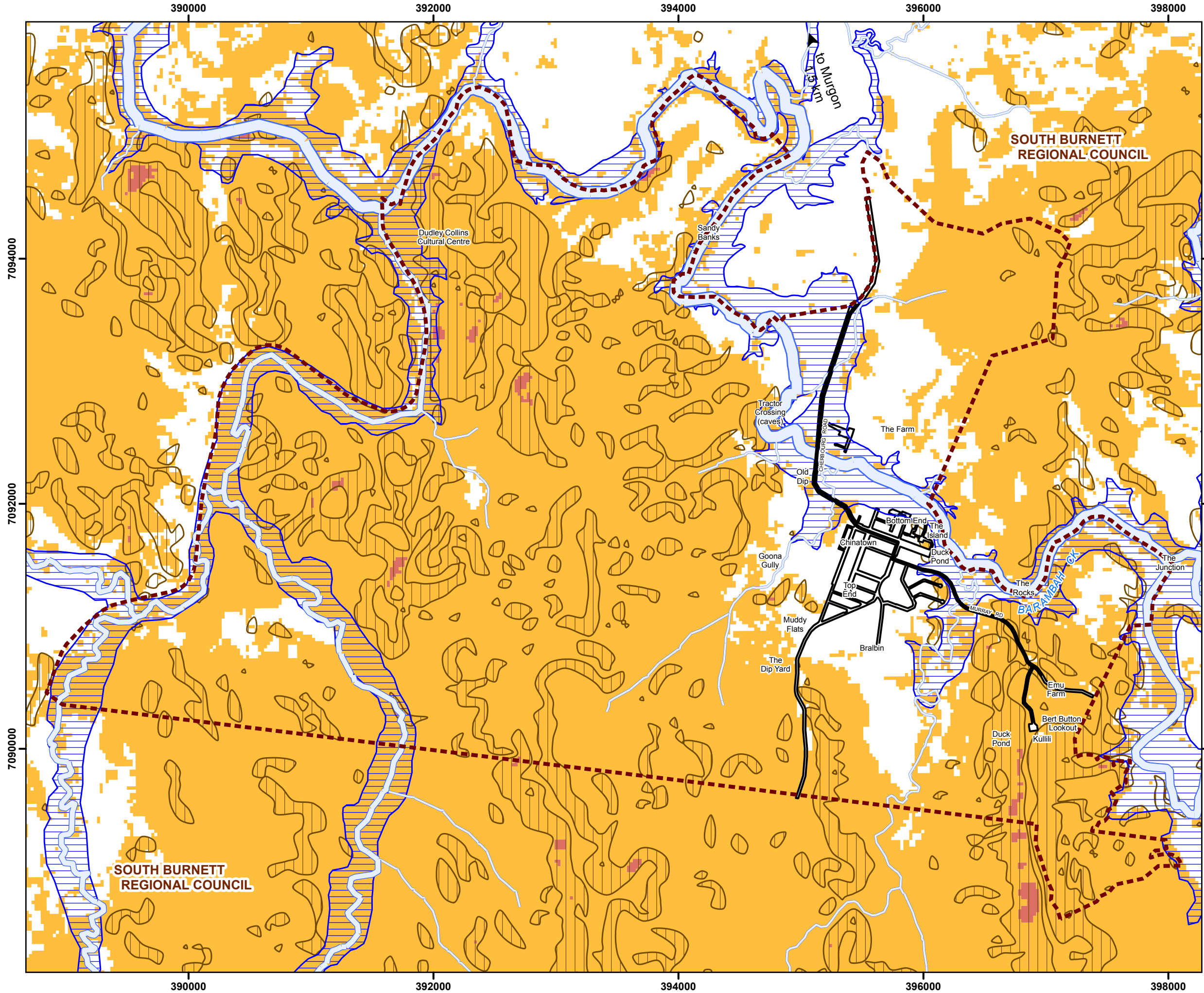
Special Note: Watercourses are based on DERM data however  
the information has been adjusted to align with other more accurate  
data. Watercourses should be considered indicative only.

Flood Hazard data has been derived from DNRM data capture  
undertaken during the 2011 floods, from imagery taken on  
24 Jan 2011. This data covers Barambah Creek from 'The Rocks'  
through to approx 500m from Murgon Weir. Flood data for the  
balance of the region consists of the 'Interim Floodplain Assessment  
Overlay' (FAO), Version 1X, dated 28 March 2012.



**Natural Hazards  
Map SFM-003a**

Cherbourg Shire  
Strategic Plan  
Map



Legend

Contextual information

Cherbourg Local Government Area

Major Road Network

Surveyed Roads

Waterway

Natural Hazards

Flood Hazard

Landslide

Landslide Hazard (slope 15% and over)

Bushfire Hazard

Bushfire Hazard - High

Bushfire Hazard - Medium

Updated: 13/03/2013

Data sources: (c) Department of Infrastructure and Planning,

November 2010;

(c) Emergency Services Queensland 2006; (c) Department of

Natural Resources and Mines, 2012

AECOM does not warrant the accuracy or completeness of information displayed in this map and any person using it does so at their own risk. AECOM shall bear no responsibility or liability for any errors, faults, defects, or omissions in the information.

Bushfire Risk analysis data was supplied by the Rural Fire Service Division of Queensland Fire & Rescue Service. This data is to be used as a guide only for planning purposes. While every care is taken to ensure the accuracy of this data, the Department of Emergency Services makes no representations or Warranties about its accuracy, reliability completeness or suitability and disclaims all responsibility and liability.

Special Note: Watercourses are based on DERM data however the information has been adjusted to align with other more accurate data. Watercourses should be considered indicative only.

Flood Hazard data has been derived from DNRM data capture undertaken during the 2011 floods, from imagery taken on 24 Jan 2011. This data covers Barambah Creek from 'The Rocks' through to approx 500m from Murgon Weir. Flood data for the balance of the region consists of the 'Interim Floodplain Assessment Overlay' (IFAO), Version 1X, dated 28 March 2012.

Approx Scale @ A3 1:30,000

0 0.5 1

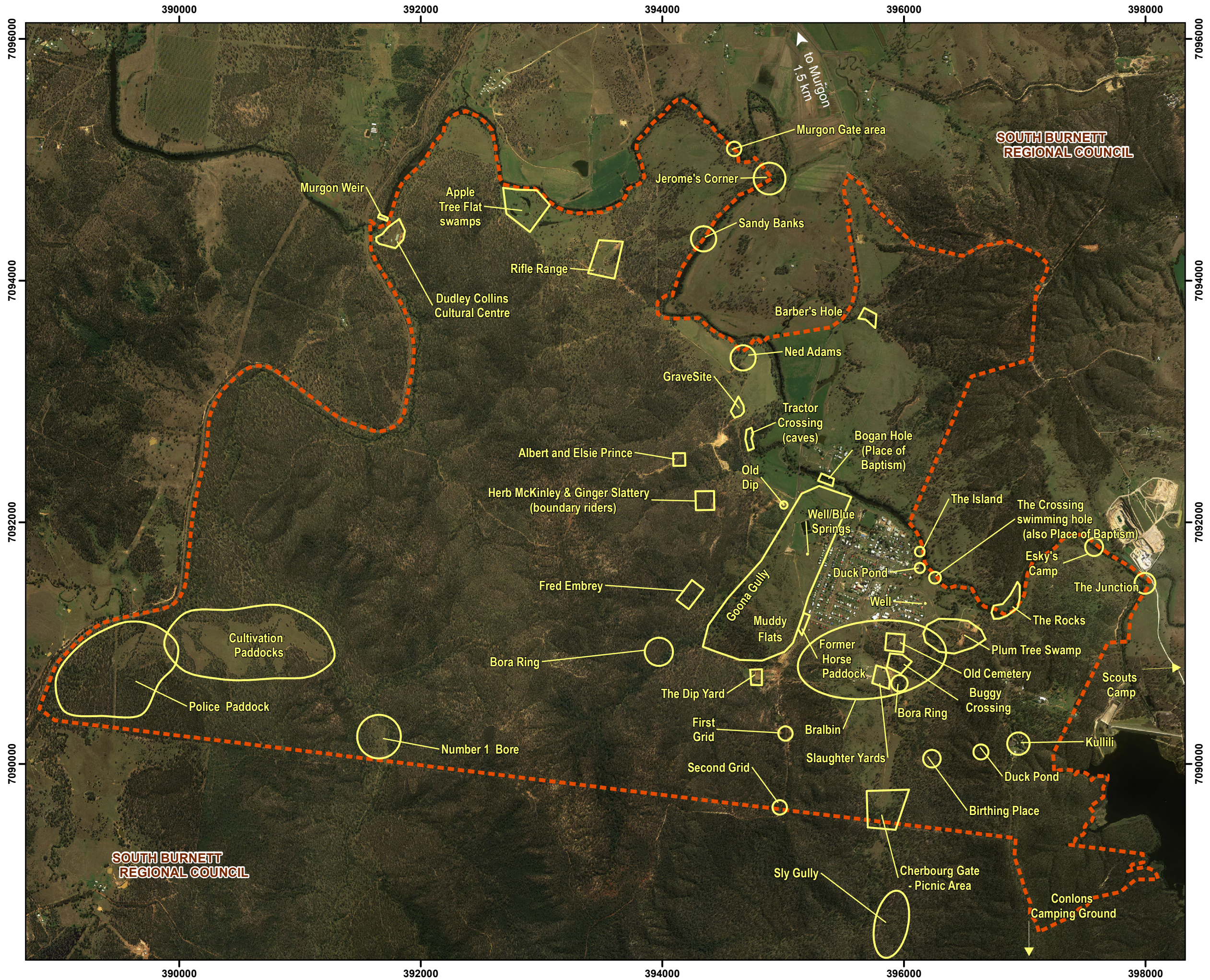
Kilometres



Natural Hazards  
Map SFM-003b



**Cherbourg Shire  
Strategic Plan  
Map**



**Legend**

**Contextual information**  
Cherbourg Local Government Area

**Areas of Historical Importance**  
Historically Important Locations

Updated: 13/03/2013

Data sources: (c) Department of Infrastructure and Planning, November 2010

AECOM does not warrant the accuracy or completeness of information displayed in this map and any person using it does so at their own risk. AECOM shall bear no responsibility or liability for any errors, faults, defects, or omissions in the information.

Special Note: Watercourses are based on DERM data however the information has been adjusted to align with other more accurate data. Watercourses should be considered indicative only.

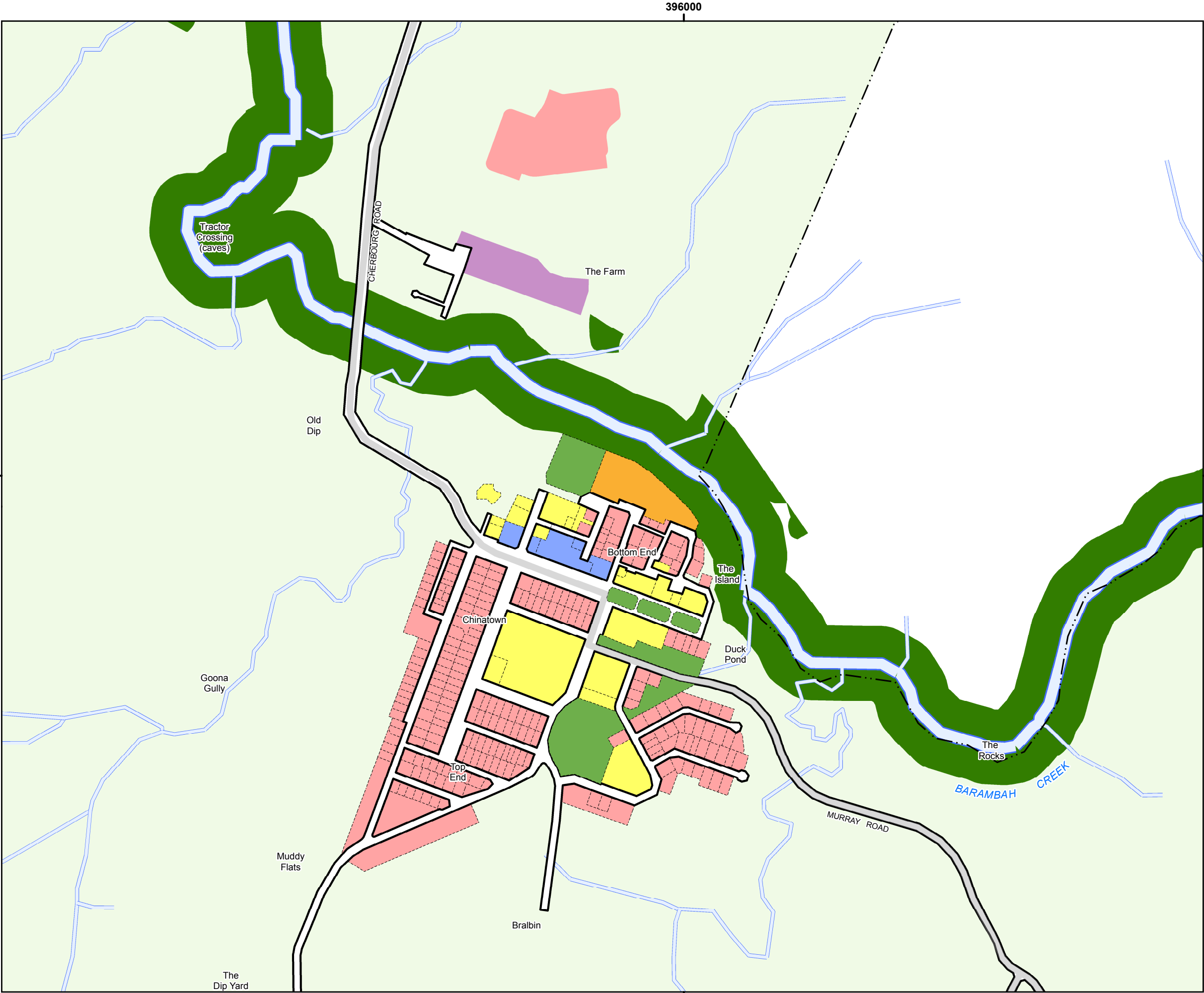
Approx Scale @ A3 1:30,000

0 0.5 1  
Kilometres

**Places of Historical Importance  
Map SFM-004**



Cherbourg Shire  
Planning Scheme  
Zone Map



**Zones**

**Residential zones category**

General residential

**Centre zones category**

Local Centre

**Recreation zones category**

Recreation and Open Space

**Industry zones category**

Industry

**Other zones category**

Community Facilities

Environmental management and conservation

Limited development (constrained land)

Rural

Local Government Boundary

Derived Lot Boundaries

Surveyed Roads

Waterway

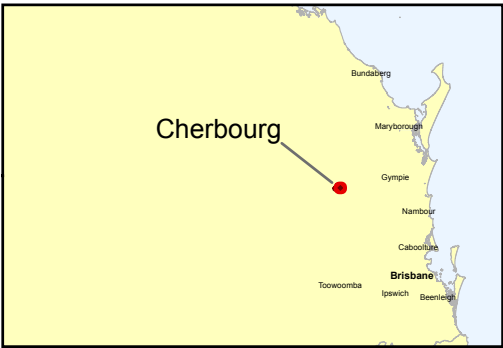
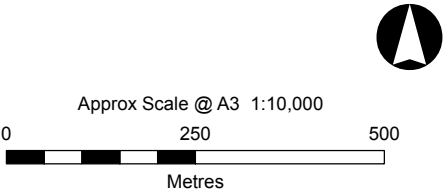
Updated: 13/03/2013

Data sources: (c) Department of Infrastructure and Planning, November 2010

AECOM does not warrant the accuracy or completeness of information displayed in this map and any person using it does so at their own risk. AECOM shall bear no responsibility or liability for any errors, faults, defects, or omissions in the information.

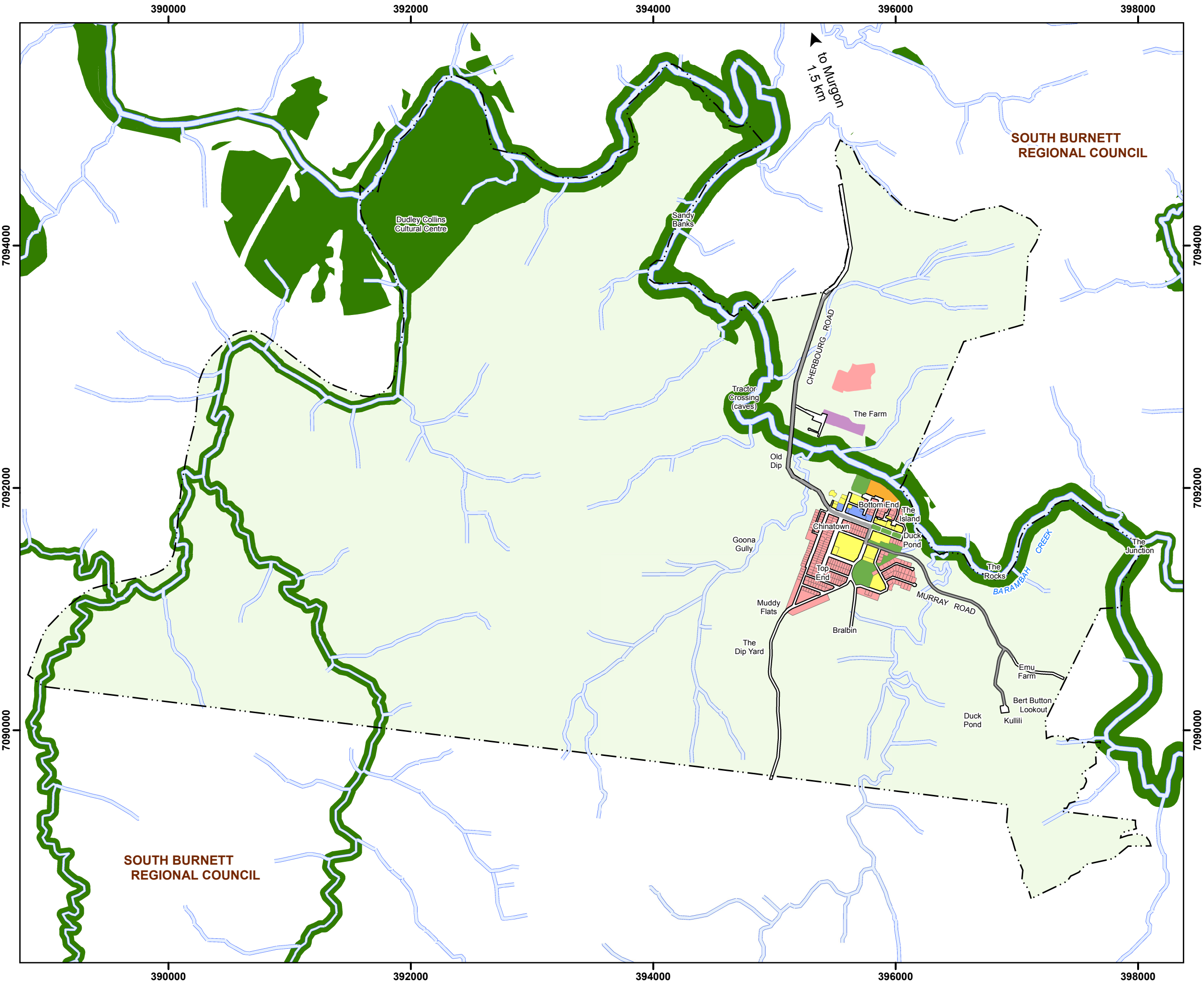
Special Note: Watercourses are based on DERM data however the information has been adjusted to align with other more accurate data. Watercourses should be considered indicative only.

Where not part of the DCDB, internal lot boundaries have been derived based on occupation from 2011 orthorectified aerial imagery and CAD Detail Survey. They should not be considered spatially accurate ('Derived Lot Boundary')



Planning Zoning  
Map - ZM-001a

Cherbourg Shire  
Planning Scheme  
Zone Map



- Zones**
- Residential zones category**
- General residential
- Centre zones category**
- Local Centre
- Recreation zones category**
- Recreation and Open Space
- Industry zones category**
- Industry
- Other zones category**
- Community Facilities
  - Environmental management and conservation
  - Limited development (constrained land)
  - Rural
- Legend:**
- Local Government Boundary
  - Surveyed Roads
  - Derived Lot Boundaries
  - Waterway

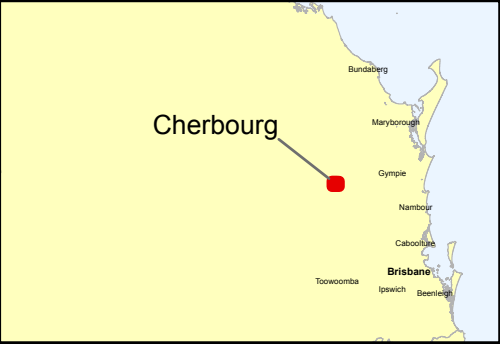
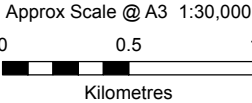
Updated: 13/03/2013

Data sources: (c) Department of Infrastructure and Planning, November 2010

AECOM does not warrant the accuracy or completeness of information displayed in this map and any person using it does so at their own risk. AECOM shall bear no responsibility or liability for any errors, faults, defects, or omissions in the information.

Special Note: Watercourses are based on DERM data however the information has been adjusted to align with other more accurate data. Watercourses should be considered indicative only.

Where not part of the DCDB, internal lot boundaries have been derived based on occupation from 2011 orthorectified aerial imagery and CAD Detail Survey. They should not be considered spatially accurate ('Derived Lot Boundary')



Planning Zoning  
Map ZM-001b



# Priority infrastructure plan mapping and plans

Schedule 3



QUEENSLAND  
GOVERNMENT



**AECOM**

## **Schedule 3    Priority infrastructure plan mapping and plans**

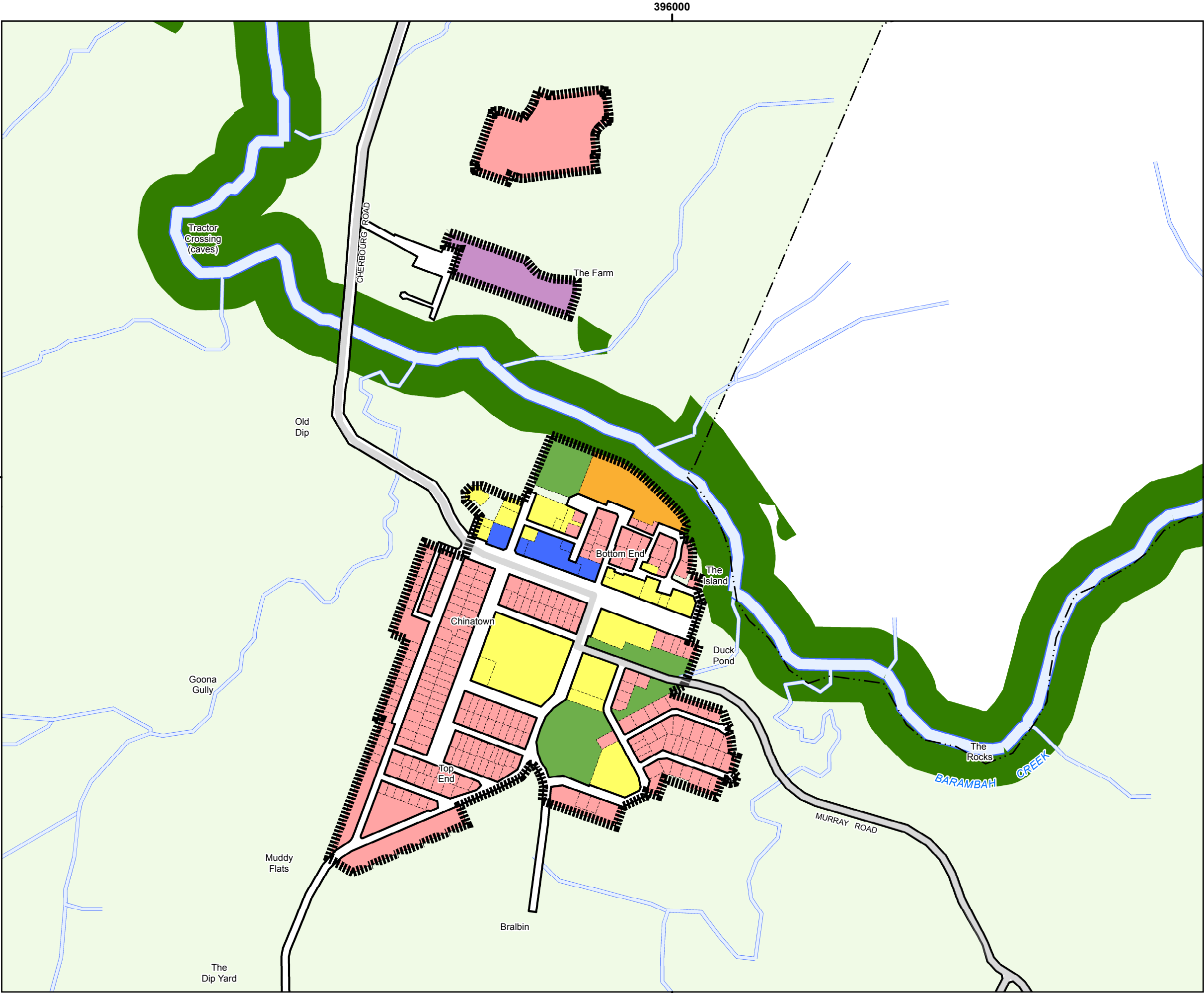
### **SC3.1 Map index**

The table below lists all priority infrastructure plan maps applicable to the planning scheme area.

**Table SC3.1.1 – Map index**

<b>Map number</b>	<b>Map title</b>	<b>Gazettal date</b>
Map PIP-001	Priority Infrastructure Area	13 <sup>th</sup> September 2013
Map PIP-002a	Utilities – Water Reticulation	13 <sup>th</sup> September 2013
Map PIP-002b	Utilities – Sewer Reticulation	13 <sup>th</sup> September 2013
Map PIP-003	Open Space	13 <sup>th</sup> September 2013
Map PIP-004	Road Infrastructure	13 <sup>th</sup> September 2013

Cherbourg Shire  
Priority Infrastructure  
Plan Map



- Zones**
- Residential zones category**
- General residential
- Centre zones category**
- Local Centre
- Recreation zones category**
- Open space
- Industry zones category**
- Industry
- Other zones category**
- Community purposes
  - Environmental management and conservation
  - Limited development (constrained land)
  - Rural
- Other features**
- Local Government Boundary
  - Surveyed Roads
  - Derived Lot Boundaries
  - Waterway
  - PIA Boundary

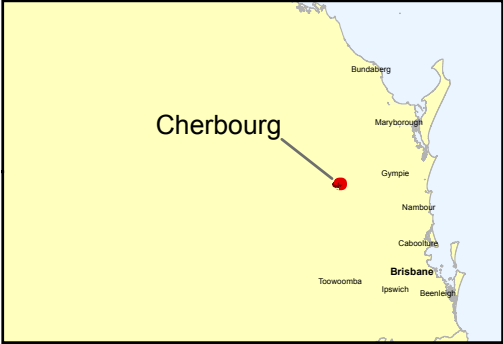
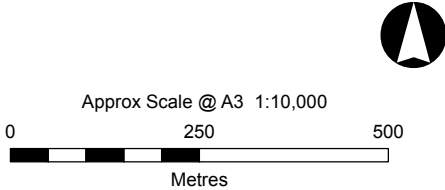
Updated: 13/03/2013

Data sources: (c) Department of Infrastructure and Planning, November 2010

AECOM does not warrant the accuracy or completeness of information displayed in this map and any person using it does so at their own risk. AECOM shall bear no responsibility or liability for any errors, faults, defects, or omissions in the information.

Special Note: Watercourses are based on DERM data however the information has been adjusted to align with other more accurate data. Watercourses should be considered indicative only.

Where not part of the DCDB, internal lot boundaries have been derived based on occupation from 2011 orthorectified aerial imagery and CAD Detail Survey. They should not be considered spatially accurate ('Derived Lot Boundary')



Priority Infrastructure Area  
Map - PIP-001



Cherbourg Shire  
Priority Infrastructure  
Plan Map

Legend

Contextual Information

Cherbourg Local Government Area

Existing Infrastructure

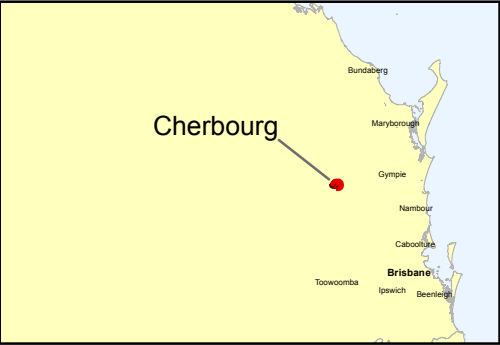
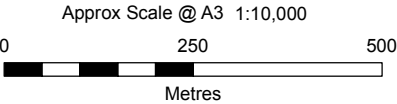
Water Reticulation

Created: 20/08/2012

Data sources: (c) Department of Infrastructure and Planning, November 2010

AECOM does not warrant the accuracy or completeness of information displayed in this map and any person using it does so at their own risk. AECOM shall bear no responsibility or liability for any errors, faults, defects, or omissions in the information.

Note: Utilities information was supplied by Black & More in CAD format, and has been adjusted to fit existing DCDB and aerial imagery. Infrastructure information shown therefore cannot be guaranteed to be complete or spatially accurate.



PIP - Utilities  
Water Reticulation  
Map PIP-002a





Cherbourg Shire  
Priority Infrastructure  
Plan Map

**Legend**

**Contextual Information**  
Cherbourg Local Government Area

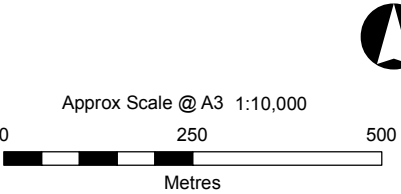
**Existing Infrastructure**  
Sewer Reticulation  
Sewer Treatment Ponds

Updated: 13/03/2013

Data sources: (c) Department of Infrastructure and Planning, November 2010

AECOM does not warrant the accuracy or completeness of information displayed in this map and any person using it does so at their own risk. AECOM shall bear no responsibility or liability for any errors, faults, defects, or omissions in the information.

Note: Utilities information was supplied by Black & More in CAD format, and has been adjusted to fit existing DCDB and aerial imagery. Infrastructure information shown therefore cannot be guaranteed to be complete or spatially accurate.



PIP - Utilities  
Sewer Reticulation  
Map PIP-002b



Cherbourg Shire  
Priority Infrastructure  
Plan Map

**Legend**

Contextual Information

Cherbourg Local Government Area



Existing Infrastructure

Open Space - Existing




Updated: 13/03/2013

Data sources: (c) Department of Infrastructure and Planning, November 2010


AECOM does not warrant the accuracy or completeness of information displayed in this map and any person using it does so at their own risk. AECOM shall bear no responsibility or liability for any errors, faults, defects, or omissions in the information.

Note: Utilities information was supplied by Black & More in CAD format, and has been adjusted to fit existing DCDB and aerial imagery. Infrastructure information shown therefore cannot be guaranteed to be complete or spatially accurate.

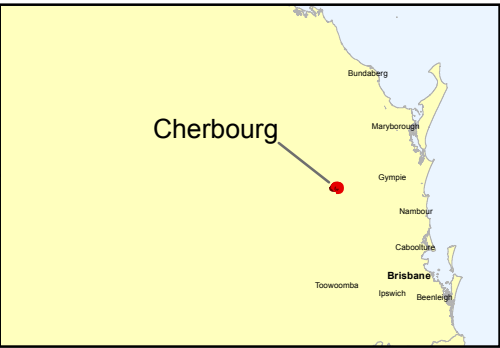


Approx Scale @ A3 1:10,000

0250500



Metres



PIP - Open Space  
Map PIP-003



7092000

7092000

396000

396000



Cherbourg Shire  
Priority Infrastructure  
Plan Map

**Legend**

**Contextual Information**  
Cherbourg Local Government Area


**Existing Infrastructure**  
Roads  
Tracks  
Future Cycling and Walking Route

Updated: 13/03/2013

Data sources: (c) Department of Infrastructure and Planning, November 2010

AECOM does not warrant the accuracy or completeness of information displayed in this map and any person using it does so at their own risk. AECOM shall bear no responsibility or liability for any errors, faults, defects, or omissions in the information.

Note: Utilities information was supplied by Black & More in CAD format, and has been adjusted to fit existing DCDB and aerial imagery. Infrastructure information shown therefore cannot be guaranteed to be complete or spatially accurate.



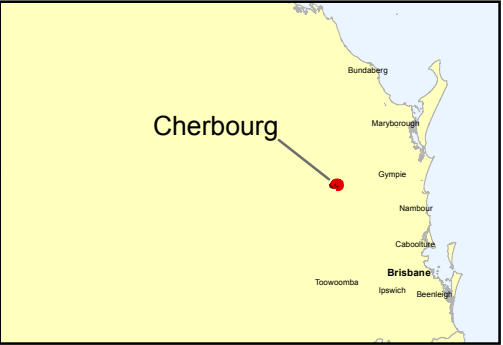
Approx Scale @ A3 1:10,000

0

250

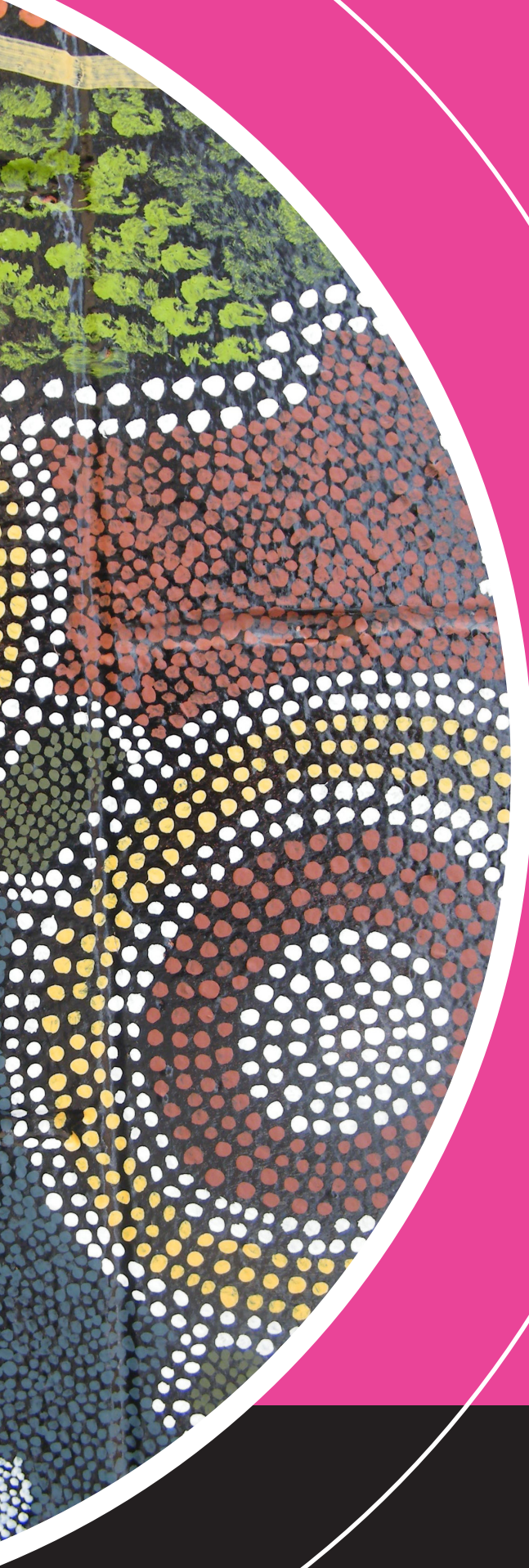
500

Metres



PIP - Road Infrastructure  
Map PIP-004





**QUEENSLAND  
GOVERNMENT**

