

Backflow Investigation

Summary Report



Table of Contents

1.0	Introduction	1
1.1	Project Background	1
1.2	Project Structure	1
1.2.1	Stage 1	1
1.2.2	Stage 2	1
1.3	Summary Report	2
2.0	Backflow Investigation – Stage 2 Report	2
2.1	Identification of Feasible Systems Recommended for Detailed Design and Modelling	2
2.2	Draft Backflow Management Strategy	7
2.3	Review of a Range of BPDs	7
2.4	Summary of Design guidelines	9
3.0	Concept Report – Case Study Areas Detailed Design	10
4.0	Preliminary Design – New Farm C and Milton B	13
5.0	Detailed Design Report – New Farm C and Milton B	13
6.0	Concept Report – Remaining Systems in the Case Study Areas	13
7.0	List of Abbreviations	15
Appendix A		
	BPD Review Summary and Images	A
Appendix B		
	Case Study Area Location Maps	B
Appendix C		
	List of Systems for which Installation of BPDs is Feasible.	C
Appendix D		
	Maps of Systems	D
Appendix E		
	Systems Assessed but Excluded	E

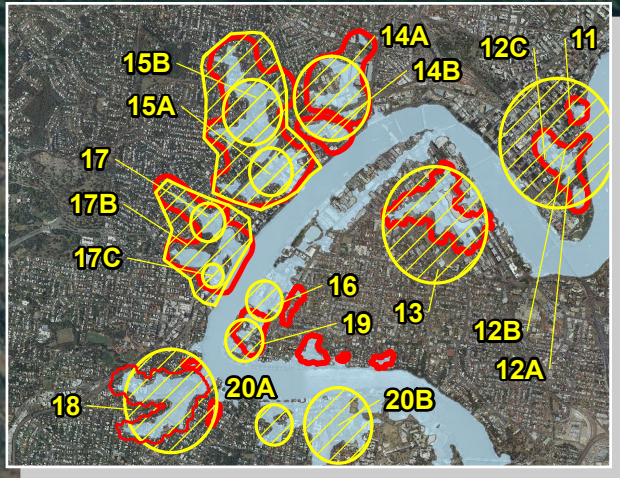
List of Figures

Figure 1	Map of systems for which installation of BPDs is feasible and 39 Stage 1 areas	6
----------	--	---

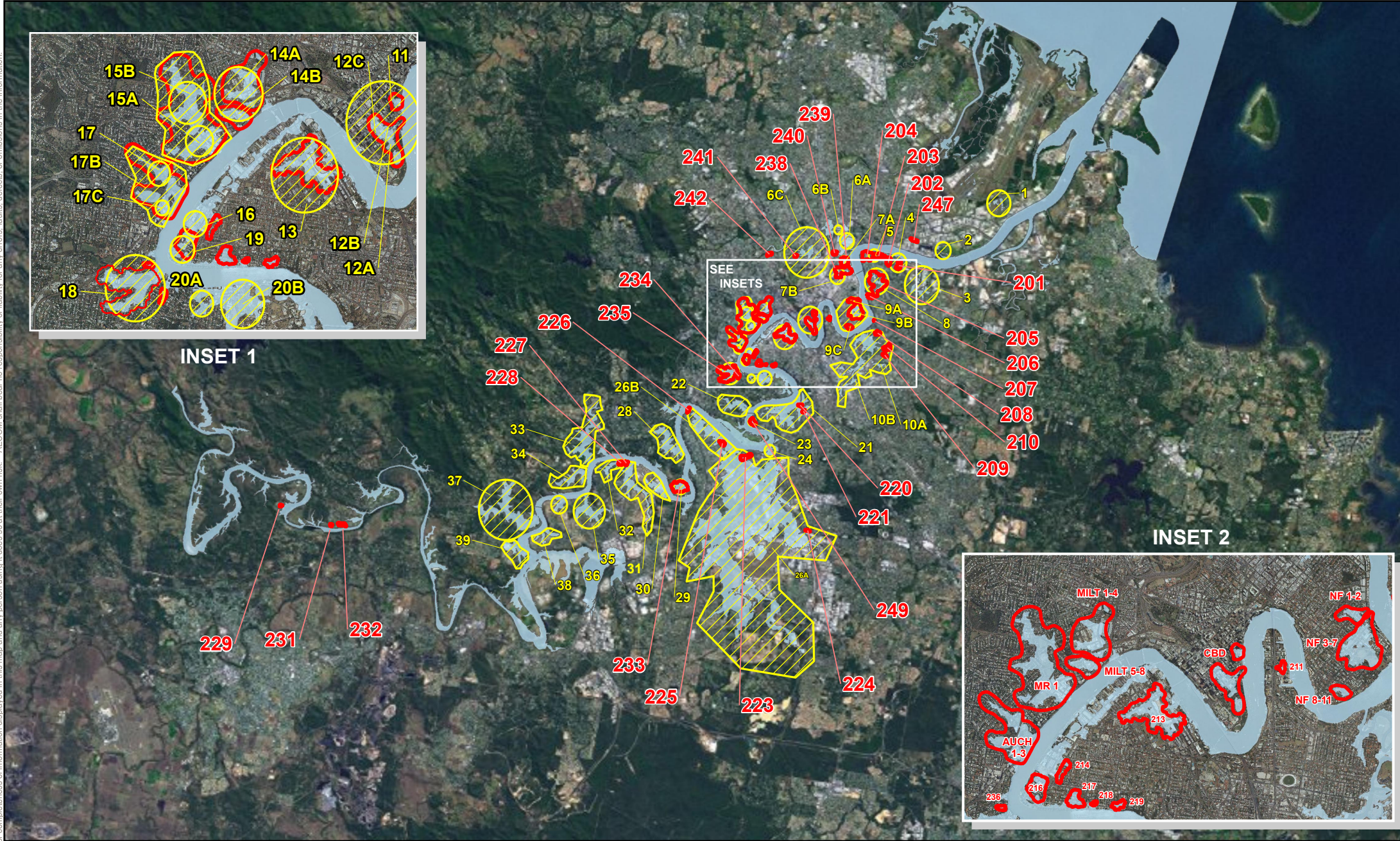
List of Tables

Table 1	List of systems for which installation of BPDs is feasible	4
Table 2	Summary of Review and Evaluation of Backflow Prevention Devices	8
Table 3:	Summary of Outcomes of Investigations	11
Table 4	Summary of Outcomes of Investigations	13

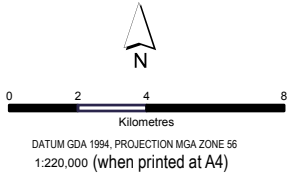
AECOM does not warrant the accuracy or completeness of information displayed in this map and any person using it does so at their own risk. AECOM shall bear no responsibility or liability for any errors, faults, defects, or omissions in the information.



INSET 1



INSET 2



AECOM
www.aecom.com

Legend

- Stage 1 Areas - (MWA, 2011)
- January 2011
- Feasible Systems

BRISBANE CITY COUNCIL
Map of systems for which
Installation of BPDs is feasible
and 39 Stage 1 areas

PROJECT ID 60238108 / 60238110
CREATED BY KLB
LAST MODIFIED BC - 8 MAY 2012
VERSION: V02

Base Data: (c) 2011 All data derived from BCC.

Appendix B

Case Study Area Location Maps

AECOM does not warrant the accuracy or completeness of information displayed in this map and any person using it does so at their own risk. AECOM shall bear no responsibility or liability for any errors, faults, defects, or omissions in the information.



<p>www.aecom.com</p> <p>DATUM GDA 1994, PROJECTION MGA, ZONE XX</p> <p>0 50 100 200</p> <p>metres</p> <p>1:6,000 (when printed at A4)</p>	<p>LEGEND</p> <ul style="list-style-type: none">• Stormwater Device— Stormwater PipeEstimated Flood Extent 2011Estimated Flood Extent 100ARIEstimated Flood Extent 50ARIEstimated Flood Extent 20ARI <p>Data sources: Flood Extent data derived from Brisbane City Council Floodwise property reports. Imagery and utilities derived from Brisbane City Council.</p>	<p>Brisbane City Council</p> <p>BPD Detail Design Project</p> <p>New Farm Estimated Flood Extents</p> <table><tr><td>PROJECT ID</td><td>60238108</td></tr><tr><td>CREATED BY</td><td>KB</td></tr><tr><td>LAST MODIFIED</td><td>KB - 05 DEC 2011</td></tr><tr><td>VERSION:</td><td>V02</td></tr></table> <p>Map 01</p>	PROJECT ID	60238108	CREATED BY	KB	LAST MODIFIED	KB - 05 DEC 2011	VERSION:	V02
PROJECT ID	60238108									
CREATED BY	KB									
LAST MODIFIED	KB - 05 DEC 2011									
VERSION:	V02									

AECOM does not warrant the accuracy or completeness of information displayed in this map and any person using it does so at their own risk. AECOM shall bear no responsibility or liability for any errors, faults, defects, or omissions in the information.



www.aecom.com

DATUM GDA 1994, PROJECTION MGA, ZONE XX

0 40 80 160

metres

1:4,000 (when printed at A4)

LEGEND

- Stormwater Device
- Stormwater Pipe
- Estimated Flood Extent 2011
- Estimated Flood Extent 100ARI
- Estimated Flood Extent 50ARI
- Estimated Flood Extent 20ARI

Data sources:

Flood Extent data derived from Brisbane City Council Floodwise property reports.
Imagery and utilities derived from Brisbane City Council.

Brisbane City Council

BPD Detail Design Project

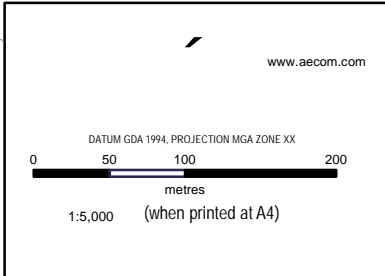
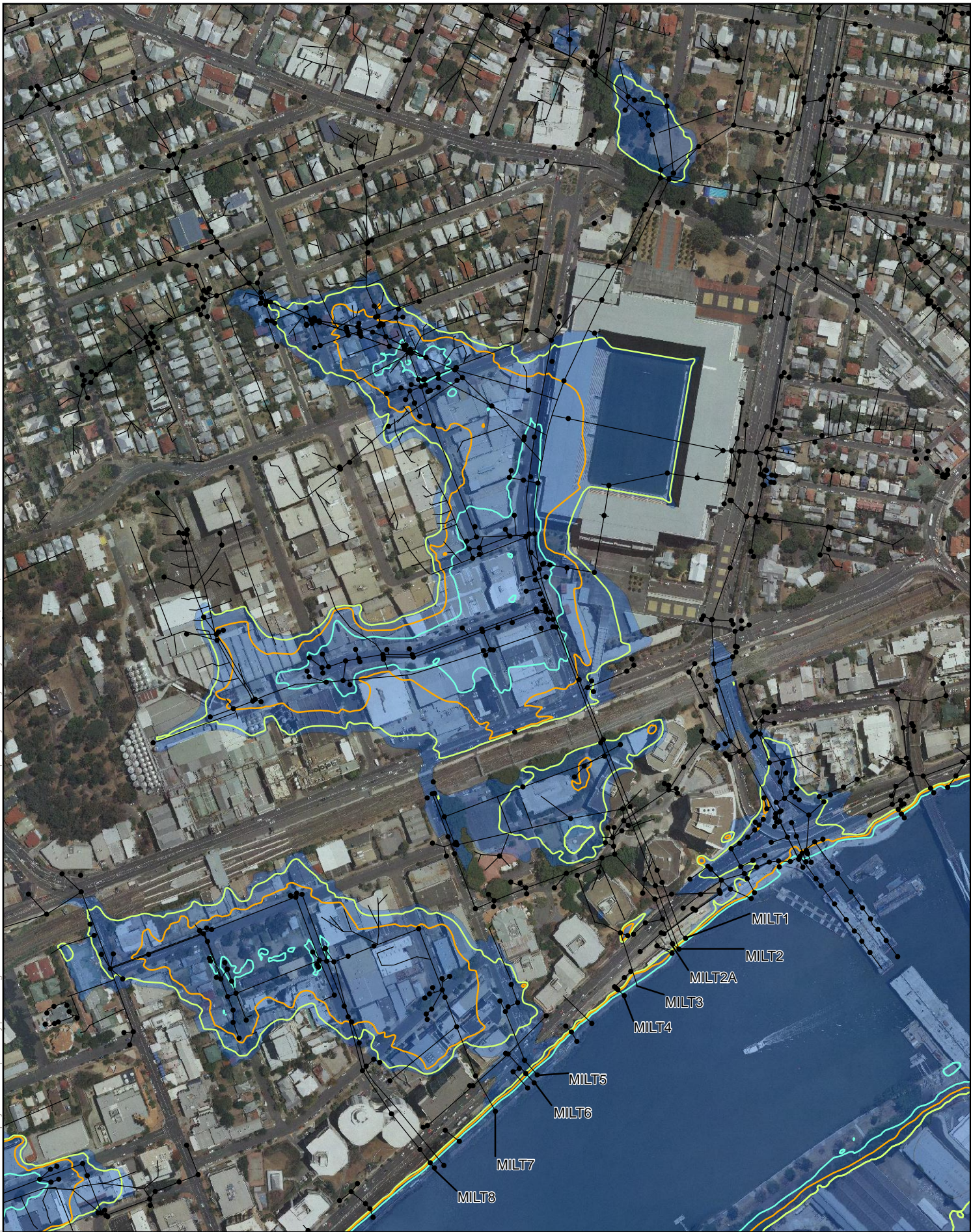
Brisbane CBD Estimated Flood Extents

PROJECT ID 60238108
CREATED BY KB
LAST MODIFIED KB - 05 DEC 2011
VERSION: V02

Map

02

AECOM does not warrant the accuracy or completeness of information displayed in this map and any person using it does so at their own risk. AECOM shall bear no responsibility or liability for any errors, faults, defects, or omissions in the information.



LEGEND

- Stormwater Device
- Stormwater Pipe
- Estimated Flood Extent 2011
- Estimated Flood Extent 100ARI
- Estimated Flood Extent 50ARI
- Estimated Flood Extent 20ARI

Data sources:

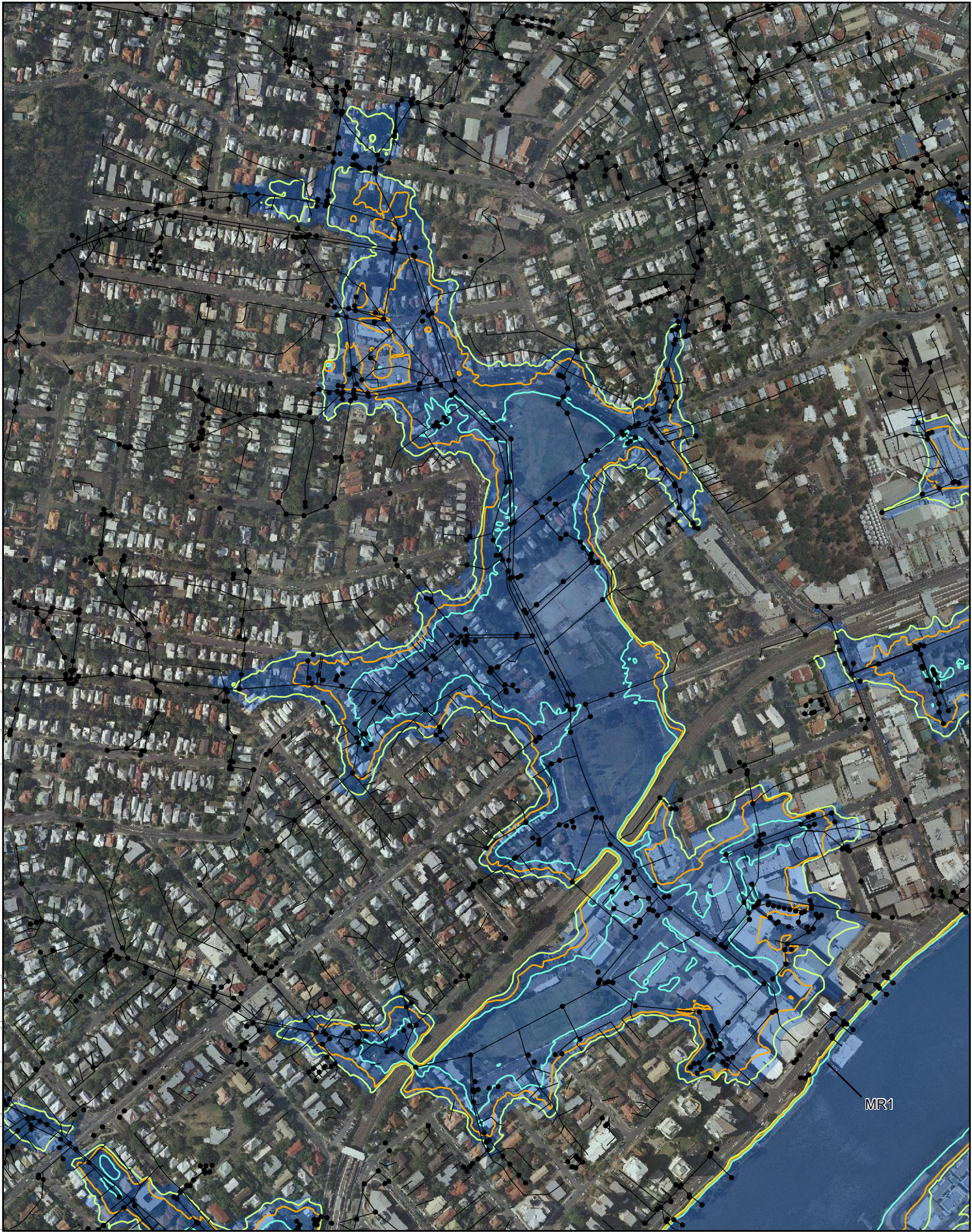
Flood Extent data derived from Brisbane City Council Floodwise property reports.
Imagery and utilities derived from Brisbane City Council.


Brisbane City Council
BPD Detail Design Project
Milton Estimated Flood Extents

PROJECT ID 60238108
CREATED BY KB
LAST MODIFIED KB - 05 DEC 2011
VERSION: V02

Map
03


AECOM does not warrant the accuracy or completeness of information displayed in this map and any person using it does so at their own risk. AECOM shall bear no responsibility or liability for any errors, faults, defects, or omissions in the information.




<p> www.aecom.com</p> <p>DATUM GDA 1994, PROJECTION MGA, ZONE XX</p> <p>0 50 100 200 metres</p> <p>1:7,000 (when printed at A4)</p>	<p>LEGEND</p> <ul style="list-style-type: none">• Stormwater Device— Stormwater Pipe■ Estimated Flood Extent 2011■ Estimated Flood Extent 100ARI■ Estimated Flood Extent 50ARI■ Estimated Flood Extent 20ARI <p><small>Data sources: Flood Extent data derived from Brisbane City Council Floodwise property reports. Imagery and utilities derived from Brisbane City Council.</small></p>	<p>Brisbane City Council</p> <p>BPD Detail Design Project</p> <p>Milton Rosalie Estimated Flood Extents</p> <table><tr><td>PROJECT ID</td><td>60238108</td></tr><tr><td>CREATED BY</td><td>KB</td></tr><tr><td>LAST MODIFIED</td><td>KB - 05 DEC 2011</td></tr><tr><td>VERSION:</td><td>V02</td></tr></table> <table><tr><td>Map</td></tr><tr><td>04</td></tr></table>	PROJECT ID	60238108	CREATED BY	KB	LAST MODIFIED	KB - 05 DEC 2011	VERSION:	V02	Map	04
PROJECT ID	60238108											
CREATED BY	KB											
LAST MODIFIED	KB - 05 DEC 2011											
VERSION:	V02											
Map												
04												

AECOM does not warrant the accuracy or completeness of information displayed in this map and any person using it does so at their own risk. AECOM shall bear no responsibility or liability for any errors, faults, defects, or omissions in the information.




www.aecom.com

DATUM GDA 1994, PROJECTION MGA ZONE XX



metres

1:5,000 (when printed at A4)

LEGEND

- Stormwater Device
- Stormwater Pipe
- Estimated Flood Extent 2011
- Estimated Flood Extent 100ARI
- Estimated Flood Extent 50ARI
- Estimated Flood Extent 20ARI

Data sources:
Flood Extent data derived from Brisbane City Council Floodwise property reports.
Imagery and utilities derived from Brisbane City Council.

Brisbane City Council

BPD Detail Design Project

Auchenflower Estimated Flood Extents

PROJECT ID	60238108
CREATED BY	KB
LAST MODIFIED	KB - 05 DEC 2011
VERSION:	V2

Map

05

Appendix D

Maps of Systems

AECOM does not warrant the accuracy or completeness of information displayed in this map and any person using it does so at their own risk. AECOM shall bear no responsibility or liability for any errors, faults, defects, or omissions in the information.



AECOM
www.aecom.com

DATUM GDA 1994, PROJECTION MGA ZONE 56
0 15 30 60
metres
1:2,000 (when printed at A4)

LEGEND

- Stormwater Device
- Stormwater Pipe
- 201 Backflow Contours
- January 2011
- Proposed Backflow Management Area
- Q5
- Q20
- Q50
- 2011
- Q100

60238108
BCC
Carbeen St, Bulimba

PROJECT ID 60238108
CREATED BY KLB
LAST MODIFIED KLB - 1 MAR 2012
VERSION: V01

Map
201

Date sources:
Base Data: (c) 2011 All data derived from BCC.

AECOM does not warrant the accuracy or completeness of information displayed in this map and any person using it does so at their own risk. AECOM shall bear no responsibility or liability for any errors, faults, defects, or omissions in the information.



AECOM
www.aecom.com

DATUM GDA 1994, PROJECTION MGA ZONE 56
0 30 60 120
metres
1:3,500 (when printed at A4)

LEGEND

- Stormwater Device
- Stormwater Pipe
- Proposed Backflow Management Area
- 203 Backflow Contours**
- Q5
- Q20
- Q50
- 2011
- Q100

January 2011

60238108
BCC
Harrison St, Johnston St, Tennyson St
Bulimba

PROJECT ID 60238108
CREATED BY KLB
LAST MODIFIED KLB - 1 MAR 2012
VERSION: V01

Map
203

Data sources:
Base Data: (c) 2011 All data derived from BCC.

AECOM does not warrant the accuracy or completeness of information displayed in this map and any person using it does so at their own risk. AECOM shall bear no responsibility or liability for any errors, faults, defects, or omissions in the information.



AECOM
www.aecom.com

DATUM GDA 1994, PROJECTION MGA ZONE 56
0 30 60 120
metres
1:3,350 (when printed at A4)

LEGEND

- 204 Backflow Contours**
- Q5
 - Q20
 - Q50
 - 2011
 - Q100
- Stormwater Device
— Stormwater Pipe
- January 2011
Proposed Backflow Management Area

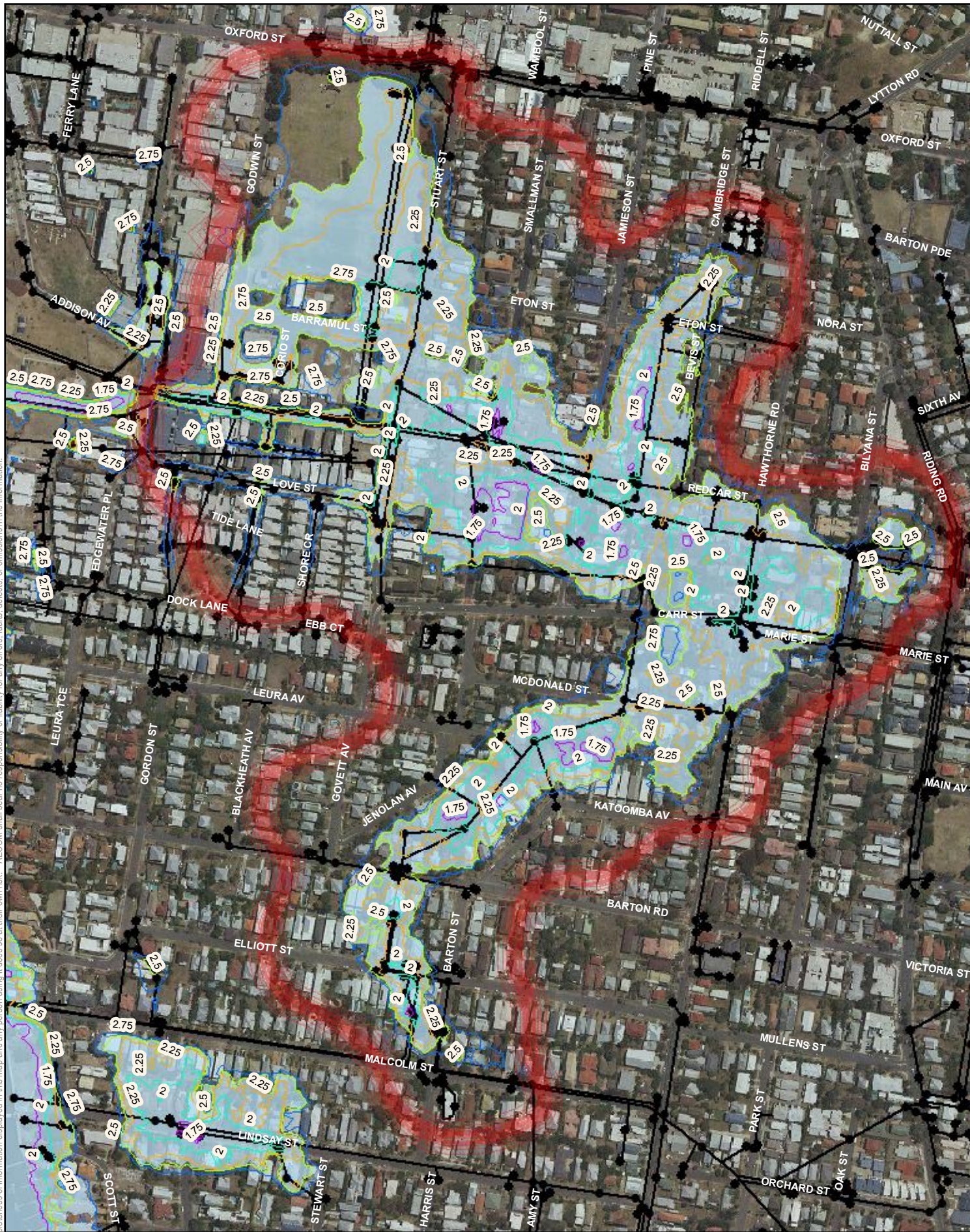
Data sources:
Base Data: (c) 2011 All data derived from BCC.

60238108
BCC
Coutts St, Kenbury St, Bulimba St,
Bulimba

PROJECT ID 60238108
CREATED BY KB
LAST MODIFIED KB - 1 MAR 2012
VERSION: V02

Map
204

AECOM does not warrant the accuracy or completeness of information displayed in this map and any person using it does so at their own risk. AECOM shall bear no responsibility or liability for any errors, faults, defects, or omissions in the information.



DATUM GDA 1994, PROJECTION MGA ZONE 56

0 50 100 200

metres

1:5,200 (when printed at A4)

AECOM
www.aecom.com

LEGEND

114 Backflow Contours January 2011

Q5 Q20 Q50 Q100 2011 Proposed Backflow Management Area

● Stormwater Device
— Stormwater Pipe

Data sources:
Base Data: (c) 2011 All data derived from BCC.

60238108
BCC
Jamieson St, Stuart St
Bulimba

PROJECT ID 60238108
CREATED BY KLB
LAST MODIFIED KLB - 1 MAR 2012
VERSION: V01

Map
205

AECOM does not warrant the accuracy or completeness of information displayed in this map and any person using it does so at their own risk. AECOM shall bear no responsibility or liability for any errors, faults, defects, or omissions in the information.



AECOM
www.aecom.com

DATUM GDA 1994, PROJECTION MGA ZONE 56
0 12.5 25 50
metres
1:1,500 (when printed at A4)

LEGEND

- Stormwater Device
- Stormwater Pipe
- 206 Backflow Contour
 - Q5
 - Q20
 - Q50
 - Q100
 - 2011
- January 2011
- Proposed Backflow Management Area

Data sources:
Base Data: (c) 2011 All data derived from BCC.

60238108
BCC
Lindsay St,
Hawthorne

PROJECT ID 60238108
CREATED BY KB
LAST MODIFIED KLB - 1 MAR 2012
VERSION: V01

Map
206

AECOM does not warrant the accuracy or completeness of information displayed in this map and any person using it does so at their own risk. AECOM shall bear no responsibility or liability for any errors, faults, defects, or omissions in the information.



AECOM
www.aecom.com

DATUM GDA 1994, PROJECTION MGA ZONE 56



1:800 (when printed at A4)

LEGEND

- Stormwater Device
- Stormwater Pipe
- 207 Backflow Contours
 - Q5
 - Q20
 - Q50
 - 2011
 - Q100
- January 2011
- Proposed Backflow Management Area

Data sources:
Base Data: (c) 2011 All data derived from BCC.

60238108
BCC
Wendell St, Norman Park

PROJECT ID 60238108
CREATED BY KLB
LAST MODIFIED KLB - 2 MAR 2012
VERSION: V01

Map
207

AECOM does not warrant the accuracy or completeness of information displayed in this map and any person using it does so at their own risk. AECOM shall bear no responsibility or liability for any errors, faults, defects, or omissions in the information.



DATUM GDA 1994, PROJECTION MGA ZONE 56

0 25 50 100

metres

1:2,800 (when printed at A4)

AECOM
www.aecom.com

LEGEND

- Stormwater Device
 - Stormwater Pipe
 - January 2011
 - Proposed Backflow Management Area
- 208 Backflow Contours**
- Q5
 - Q20
 - Q50
 - 2011
 - Q100

Data sources:
Base Data: (c) 2011 All data derived from BCC.

60238108
BCC
Brentnall St,
Norman Park

PROJECT ID 60238108
CREATED BY KLB
LAST MODIFIED KLB - 2 MAR 2012
VERSION: V01

Map
208

AECOM does not warrant the accuracy or completeness of information displayed in this map and any person using it does so at their own risk. AECOM shall bear no responsibility or liability for any errors, faults, defects, or omissions in the information.



AECOM
www.aecom.com

DATUM GDA 1994, PROJECTION MGA ZONE 56

0 15 30 60
metres

1:1,500 (when printed at A4)

LEGEND

- Stormwater Device
- Stormwater Pipe
- 211 Backflow Contours
 - Q20
 - Q50
 - Q100
 - 2011
- Proposed Backflow Management Area

Data sources:
Base Data: (c) 2011 All data derived from BCC.

60238108
BCC
Goodwin St, Kangaroo Point

PROJECT ID 60238108
CREATED BY KLB
LAST MODIFIED KLB - 2 MAR 2012
VERSION: V01

Map
211

AECOM does not warrant the accuracy or completeness of information displayed in this map and any person using it does so at their own risk. AECOM shall bear no responsibility or liability for any errors, faults, defects, or omissions in the information.



DATUM GDA 1994, PROJECTION MGA ZONE 56

0 50 100 200
metres

1:5,600 (when printed at A4)

AECOM
www.aecom.com

LEGEND

- Stormwater Device
- Stormwater Pipe
- 213 Backflow Contours
 - Q20
 - Q50
 - Q100
 - 2011
- January 2011
- Proposed Backflow Management Area

Data sources:
Base Data: (c) 2011 All data derived from BCC.

60238108
BCC

Mollison St, Montague Rd
South Brisbane/West End

PROJECT ID 60238108
CREATED BY KLB
LAST MODIFIED KLB - 2 MAR 2012
VERSION: V01

Map
213

AECOM does not warrant the accuracy or completeness of information displayed in this map and any person using it does so at their own risk. AECOM shall bear no responsibility or liability for any errors, faults, defects, or omissions in the information.



AECOM
www.aecom.com

DATUM GDA 1994, PROJECTION MGA ZONE 56
0 15 30 60
metres
1:1,700 (when printed at A4)

LEGEND

- Stormwater Device
- Stormwater Pipe
- 214 Backflow Contours
 - Q20
 - Q50
 - Q100
 - 2011
- January 2011
- Proposed Backflow Management Area

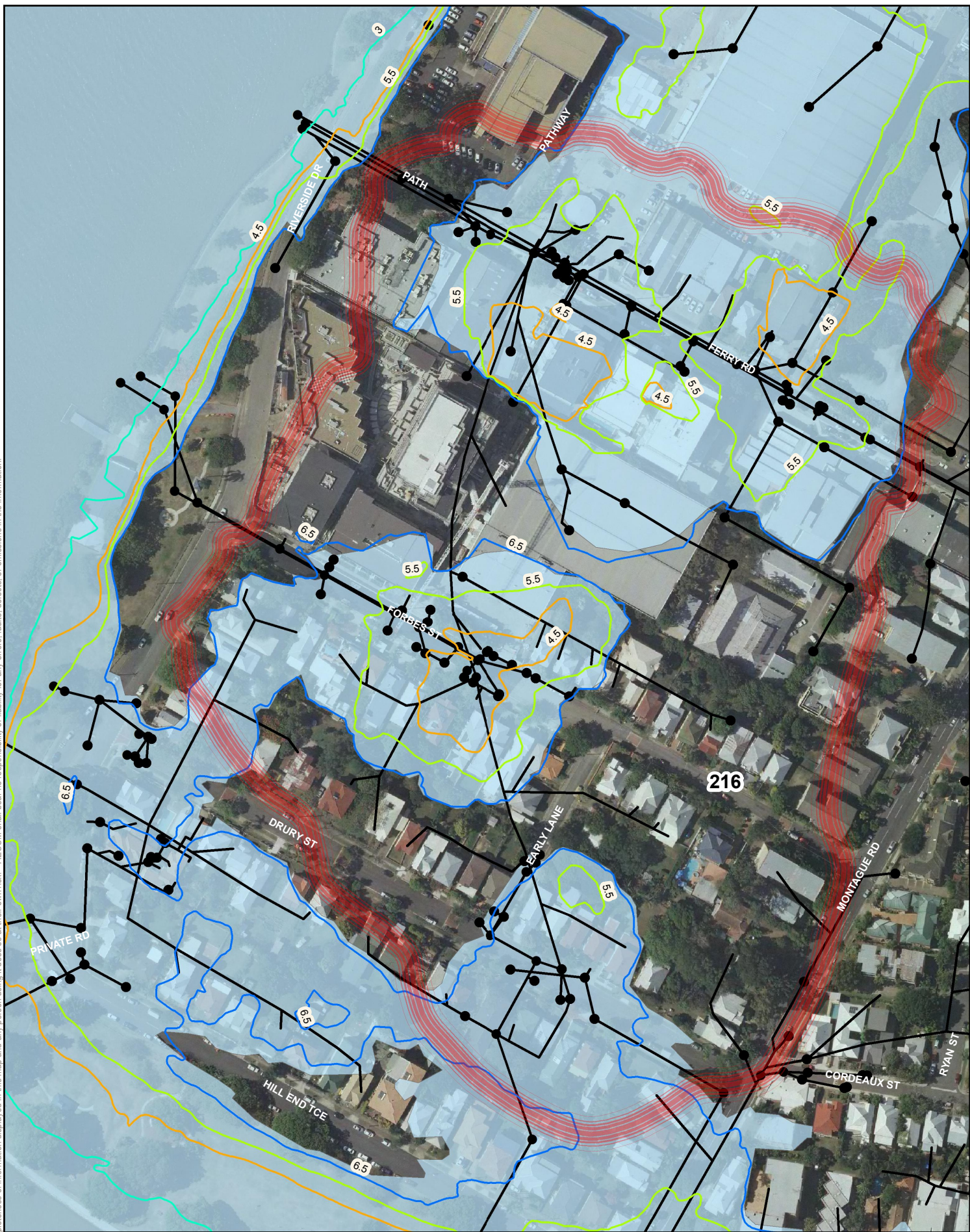
Data sources:
Base Data: (c) 2011 All data derived from BCC.

60238108
BCC
Montague Road
West End

PROJECT ID 60238108
CREATED BY KLB
LAST MODIFIED KLB - 2 MAR 2012
VERSION: V01

Map
214

AECOM does not warrant the accuracy or completeness of information displayed in this map and any person using it does so at their own risk. AECOM shall bear no responsibility or liability for any errors, faults, defects, or omissions in the information.



AECOM
www.aecom.com

DATUM GDA 1994, PROJECTION MGA ZONE 56

0 20 40 80

metres

1:2,100 (when printed at A4)

LEGEND

- Stormwater Device
- Stormwater Pipe
- 216 Backflow Contours
 - Q20
 - Q50
 - Q100
 - 2011
- January 2011
- Proposed Backflow Management Area

Data sources:
Base Data: (c) 2011 All data derived from BCC.

60238108
BCC
Montague Road, Ferry Road,
Kurilpa St, West End

PROJECT ID 60238108
CREATED BY KLB
LAST MODIFIED BC - 8 MAY 2012
VERSION: V01

Map

216

AECOM does not warrant the accuracy or completeness of information displayed in this map and any person using it does so at their own risk. AECOM shall bear no responsibility or liability for any errors, faults, defects, or omissions in the information.



AECOM
www.aecom.com

DATUM GDA 1994, PROJECTION MGA ZONE 56

0 20 40 80
metres

1:1,852 (when printed at A4)

LEGEND

- Stormwater Device
- Stormwater Pipe
- Proposed Backflow Management Area
- 217 Backflow Contours
 - Q20
 - Q50
 - Q100
 - 2011

Data sources:
Base Data: (c) 2011 All data derived from BCC.

60238108
BCC
Ryan St
West End

PROJECT ID 60238108
CREATED BY KLB
LAST MODIFIED KLB - 5 MAR 2012
VERSION: V01

Map

217

AECOM does not warrant the accuracy or completeness of information displayed in this map and any person using it does so at their own risk. AECOM shall bear no responsibility or liability for any errors, faults, defects, or omissions in the information.



AECOM
www.aecom.com

DATUM GDA 1994, PROJECTION MGA ZONE 56

0 10 20 40
metres

1:1,000 (when printed at A4)

LEGEND

- Stormwater Device
- Stormwater Pipe
- Proposed Backflow Management Area
- 2011 Backflow Contours
- Q20
- Q50
- Q100
- 2011

Data sources:
Base Data: (c) 2011 All data derived from BCC.

60238108
BCC
Ryan St, West End

PROJECT ID 60238108
CREATED BY KLB
LAST MODIFIED KLB - 5 MAR 2012
VERSION: V01

Map
218

AECOM does not warrant the accuracy or completeness of information displayed in this map and any person using it does so at their own risk. AECOM shall bear no responsibility or liability for any errors, faults, defects, or omissions in the information.



AECOM
www.aecom.com

DATUM GDA 1994, PROJECTION MGA, ZONE 56
0 10 20 40
metres
1:1,400 (when printed at A4)

LEGEND

- Stormwater Device
- Stormwater Pipe
- 219 Backflow Contours
 - Q20
 - Q50
 - Q100
 - 2011
- January 2011
- Proposed Backflow Management Area

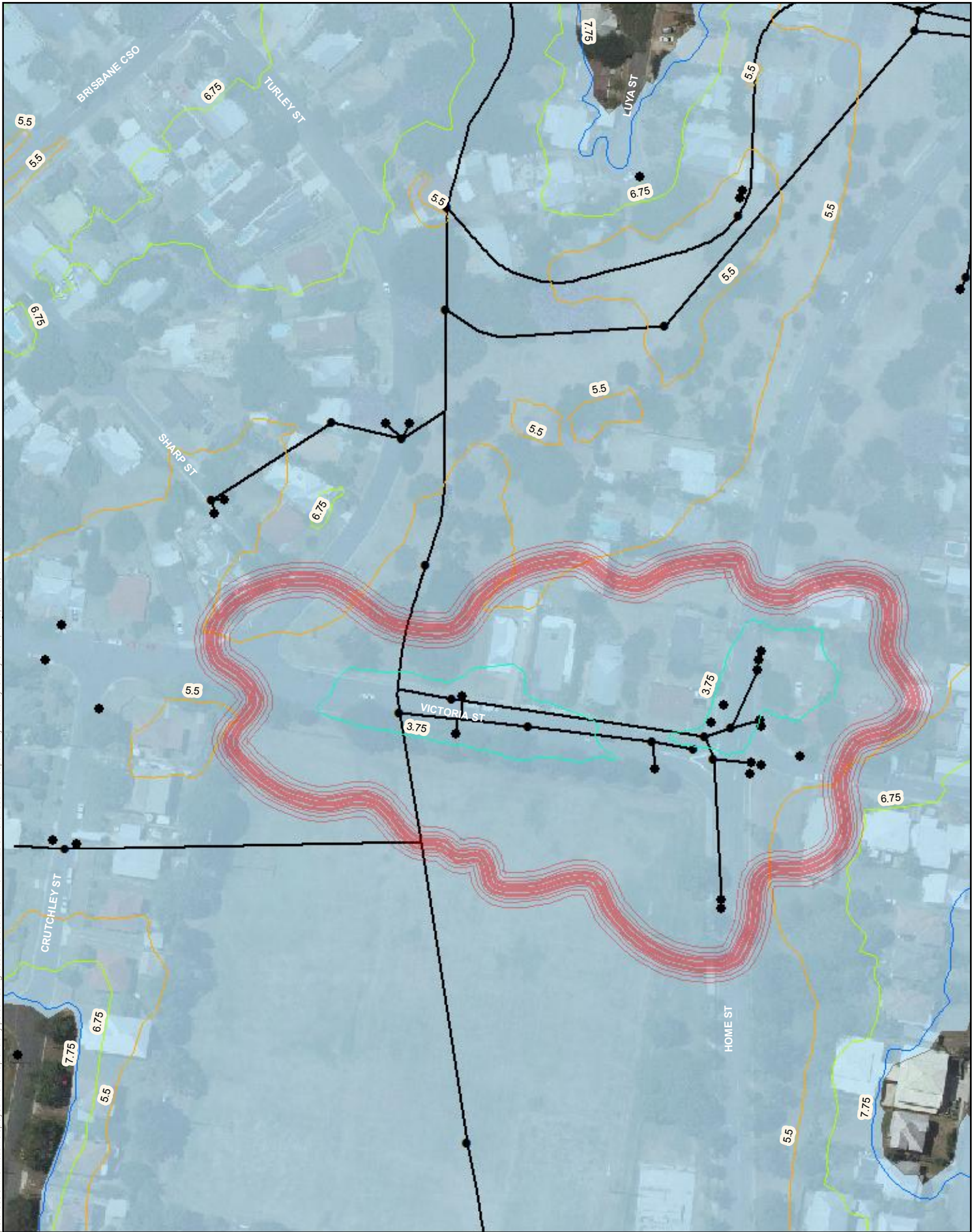
Data sources:
Base Data: (c) 2011 All data derived from BCC.

60238108
BCC
Dudley St, West End

PROJECT ID 60238108
CREATED BY KLB
LAST MODIFIED KLB - 5 MAR 2012
VERSION: V01

Map
219

AECOM does not warrant the accuracy or completeness of information displayed in this map and any person using it does so at their own risk. AECOM shall bear no responsibility or liability for any errors, faults, defects, or omissions in the information.



AECOM
www.aecom.com

DATUM GDA 1994, PROJECTION MGA ZONE 56

0 10 20 40
metres

1:1,600 (when printed at A4)

LEGEND

- Stormwater Device
- Stormwater Pipe
- 220 Backflow Contours
 - Q20
 - Q50
 - Q100
 - 2011
- January 2011
- Proposed Backflow Management Area

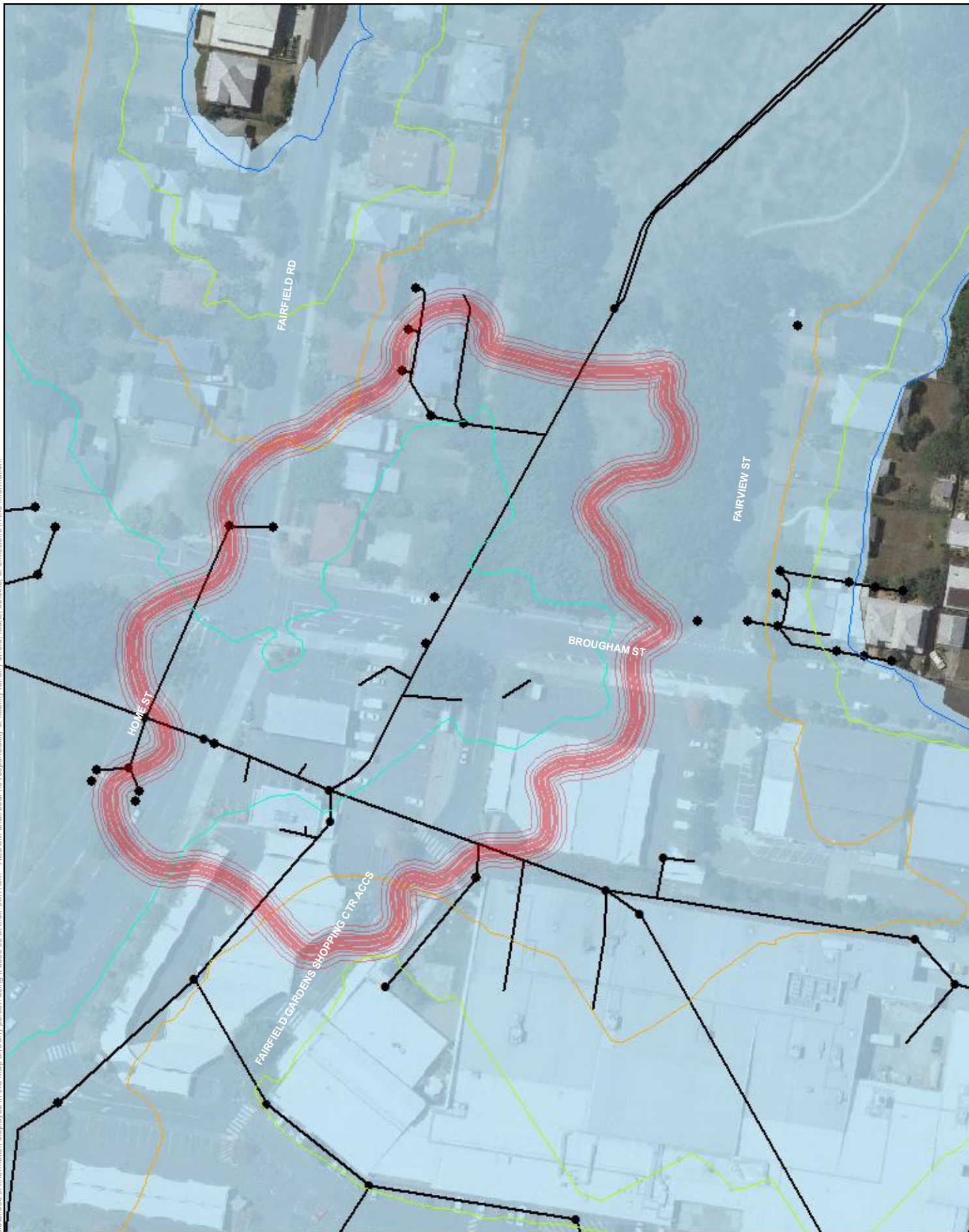
Data sources:
Base Data: (c) 2011 All data derived from BCC.

60238108
BCC
Victoria St, Fairfield

PROJECT ID 60238108
CREATED BY KLB
LAST MODIFIED KLB - 5 MAR 2012
VERSION: V01

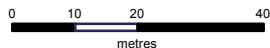
Map
220

AECOM does not warrant the accuracy or completeness of information displayed in this map and any person using it does so at their own risk. AECOM shall bear no responsibility or liability for any errors, faults, defects, or omissions in the information.



AECOM
www.aecom.com

DATUM GDA 1994, PROJECTION MGA ZONE 56



1:1,200 (when printed at A4)

LEGEND

- Stormwater Device
- Stormwater Pipe
- 221 Backflow Contours
- Q20
- Q50
- Q100
- 2011
- January 2011
- Proposed Backflow Management Area

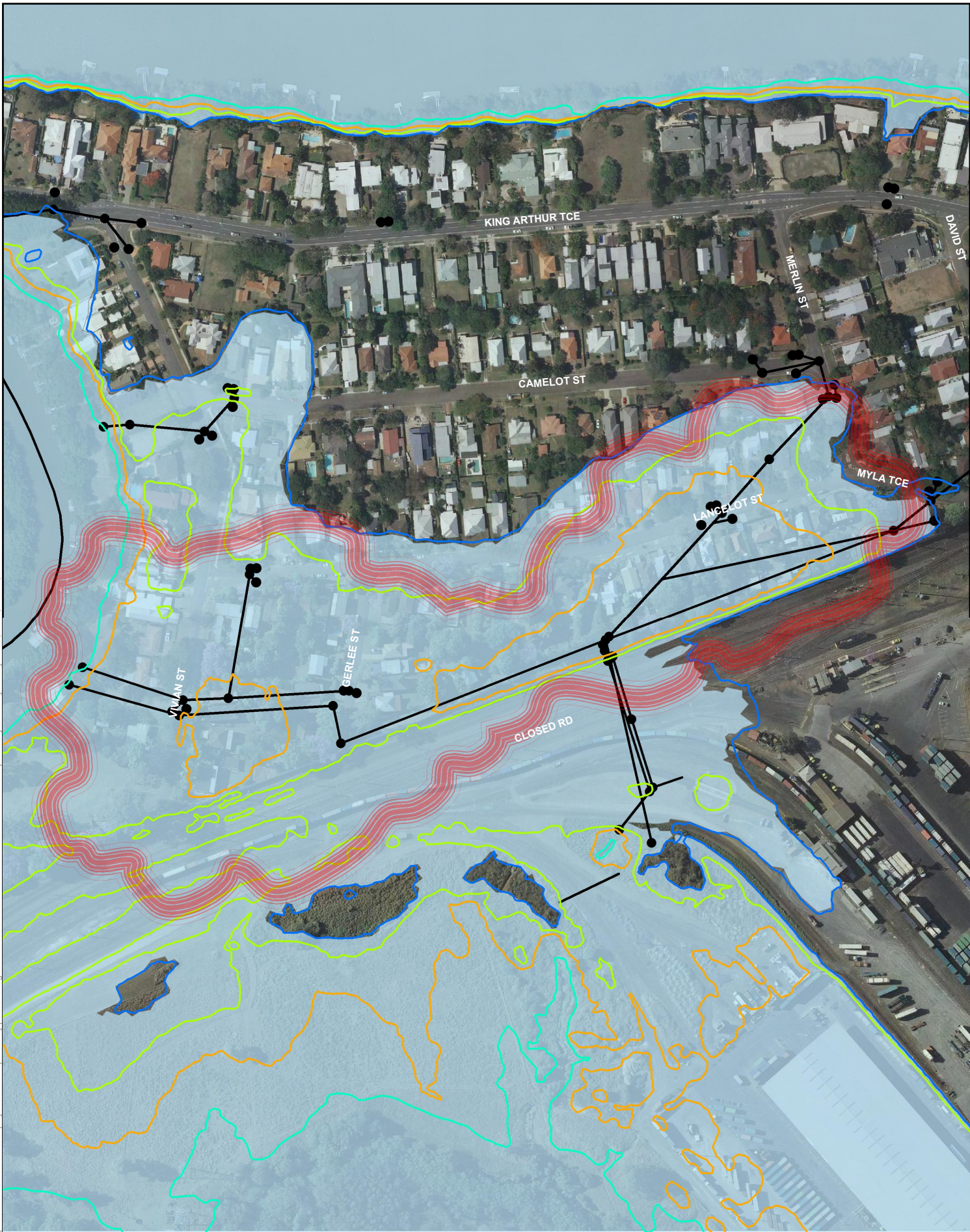
Data sources:
Base Data: (c) 2011 All data derived from BCC.

60238108
BCC
Brougham Street
Fairfield

PROJECT ID 60238108
CREATED BY KLB
LAST MODIFIED KLB - 5 MAR 2012
VERSION: V01

Map
221

AECOM does not warrant the accuracy or completeness of information displayed in this map and any person using it does so at their own risk. AECOM shall bear no responsibility or liability for any errors, faults, defects, or omissions in the information.



AECOM
www.aecom.com

DATUM GDA 1994, PROJECTION MGA ZONE 56

0 30 60 120

metres

1:3,000 (when printed at A4)

LEGEND

- Stormwater Device
- Stormwater Pipe
- 223 Backflow Contours
- Q20
- Q50
- Q100
- 2011
- January 2011
- Proposed Backflow Management Area

Data sources:

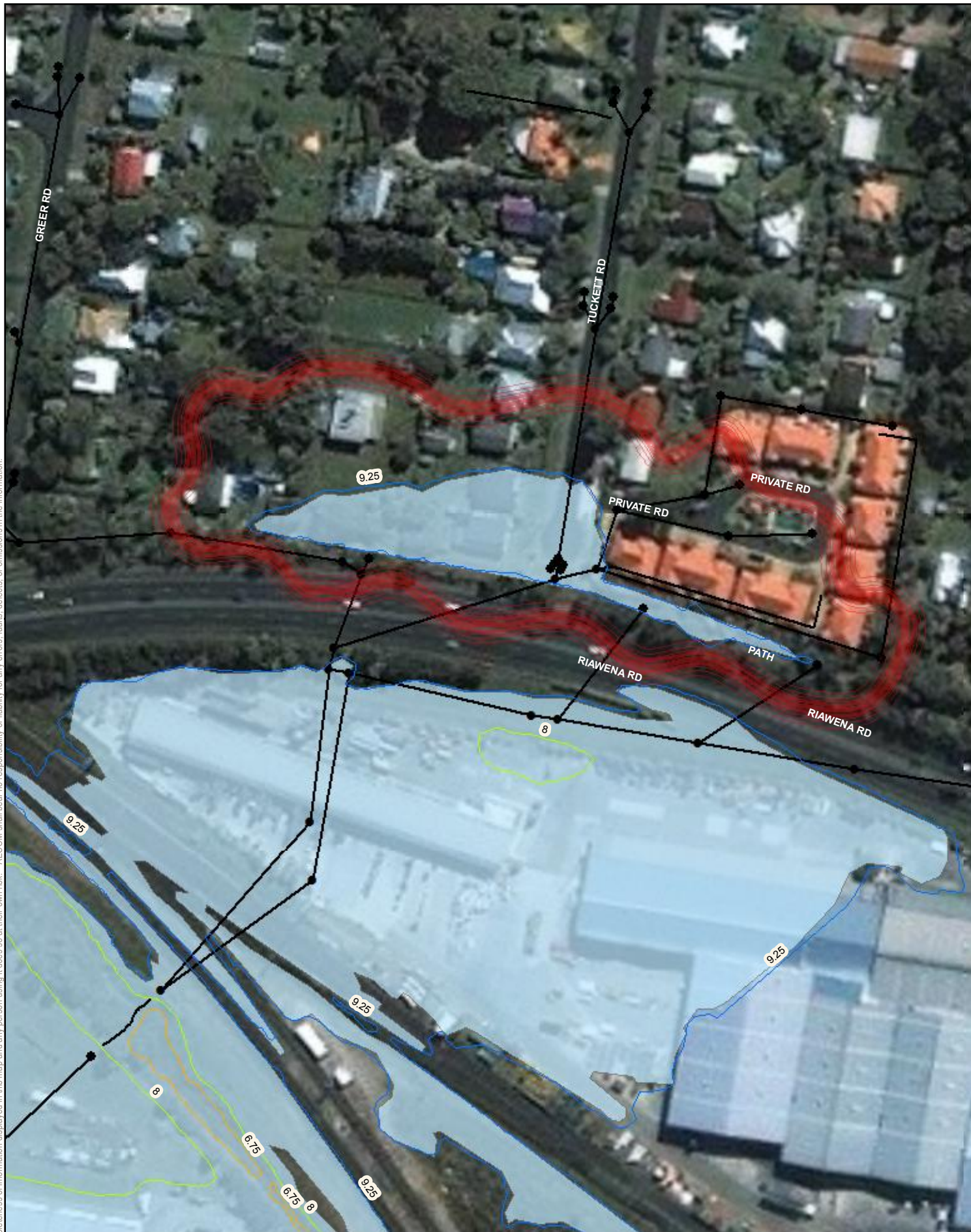
Base Data: (c) 2011 All data derived from BCC.

60238108
BCC
Vivian St,
Tennyson

PROJECT ID 60238108
CREATED BY KLB
LAST MODIFIED KLB - 05 MAR 2012
VERSION: V01

Map
223

AECOM does not warrant the accuracy or completeness of information displayed in this map and any person using it does so at their own risk. AECOM shall bear no responsibility or liability for any errors, faults, defects, or omissions in the information.



AECOM
www.aecom.com

DATUM GDA 1994, PROJECTION MGA ZONE 56

0 15 30 60
metres

1:1,600 (when printed at A4)

LEGEND

- Stormwater Device
- Stormwater Pipe
- 224 Backflow Contours
 - Q20
 - Q50
 - Q100
 - 2011
- January 2011
- Proposed Backflow Management Area

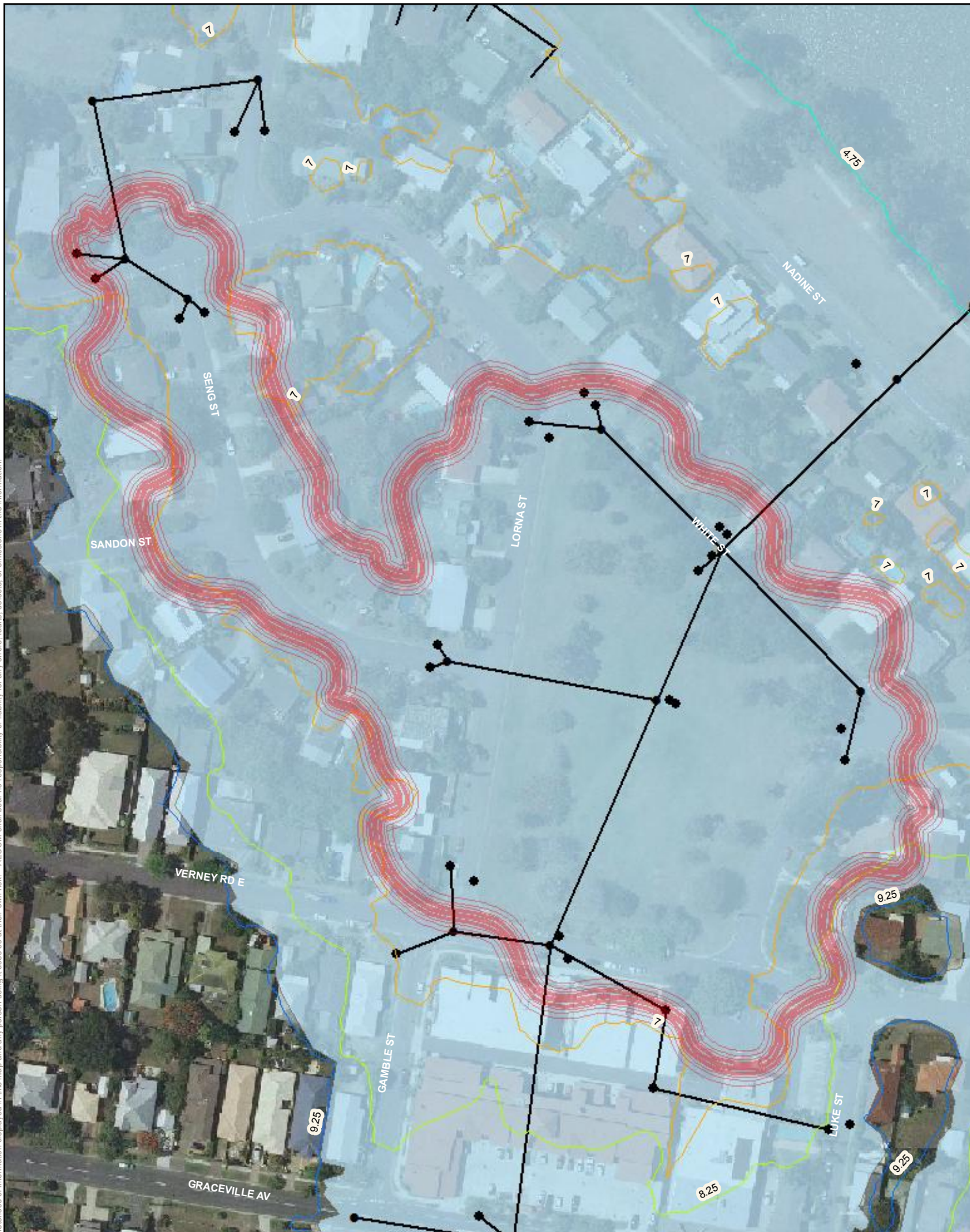
Data sources:
Base Data: (c) 2011 All data derived from BCC.

60238108
BCC
Tuckett Rd,
Salisbury

PROJECT ID 60238108
CREATED BY KLB
LAST MODIFIED KLB - 05 MAR 2012
VERSION: V01

Map
224

AECOM does not warrant the accuracy or completeness of information displayed in this map and any person using it does so at their own risk. AECOM shall bear no responsibility or liability for any errors, faults, defects, or omissions in the information.



AECOM
www.aecom.com

DATUM GDA 1994, PROJECTION MGA ZONE 56

0 15 30 60
metres

1:1,500 (when printed at A4)

LEGEND

- Stormwater Device
- Stormwater Pipe
- January 2011
- Proposed Backflow Management Area
- 225 Backflow Contours
- Q20
- Q50
- Q100
- 2011

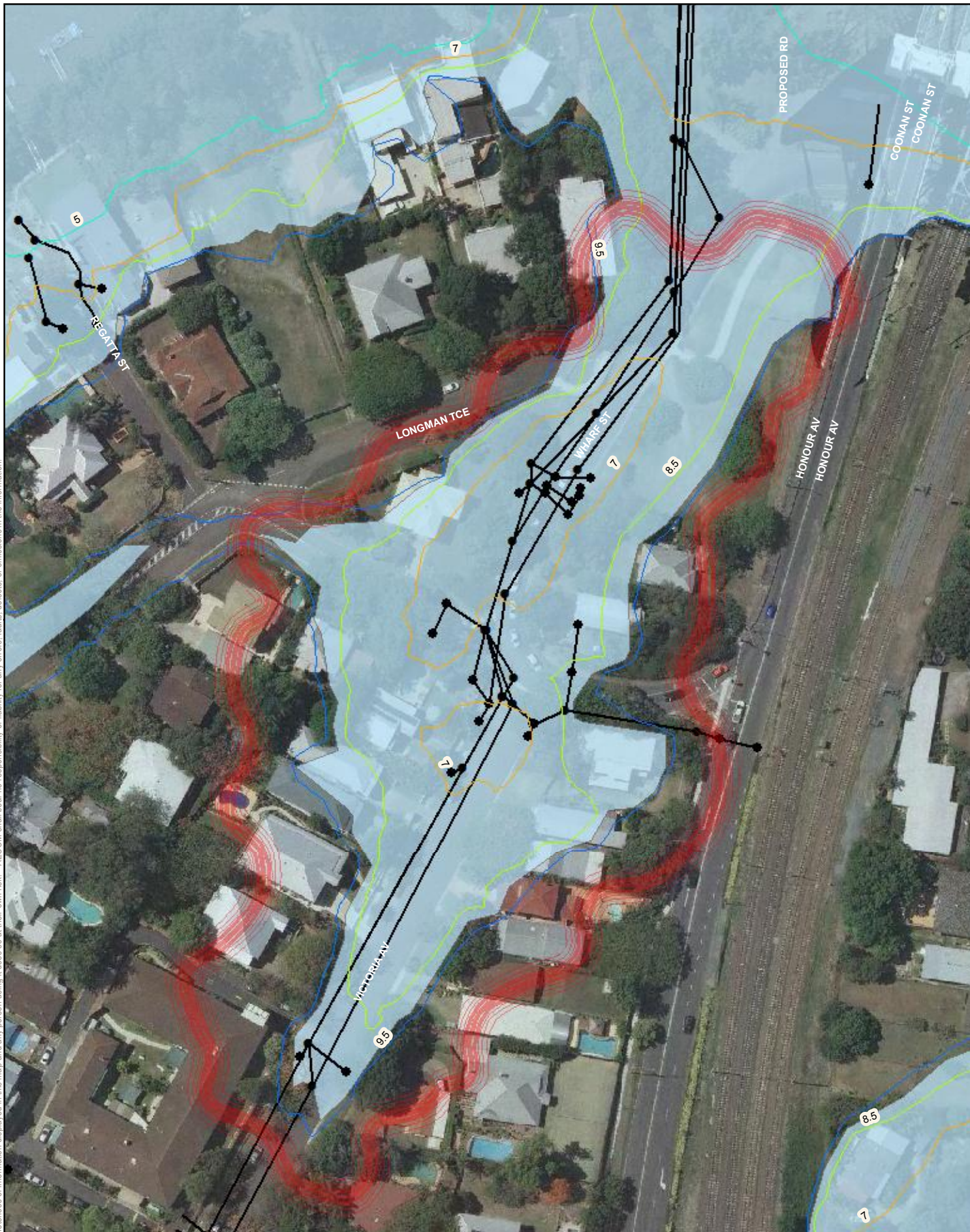
Data sources:
Base Data: (c) 2011 All data derived from BCC.

60238108
BCC
Giraween Park, Graceville

PROJECT ID 60238108
CREATED BY KLB
LAST MODIFIED KLB - 5 MAR 2012
VERSION: V01

Map
225

AECOM does not warrant the accuracy or completeness of information displayed in this map and any person using it does so at their own risk. AECOM shall bear no responsibility or liability for any errors, faults, defects, or omissions in the information.



AECOM
www.aecom.com

DATUM GDA 1994, PROJECTION MGA ZONE 56

0 12.5 25 50
metres

1:1,200 (when printed at A4)

LEGEND

- Stormwater Device
- Stormwater Pipe
- 226 Backflow Contours
 - Q20
 - Q50
 - Q100
 - 2011
- Proposed Backflow Management Area

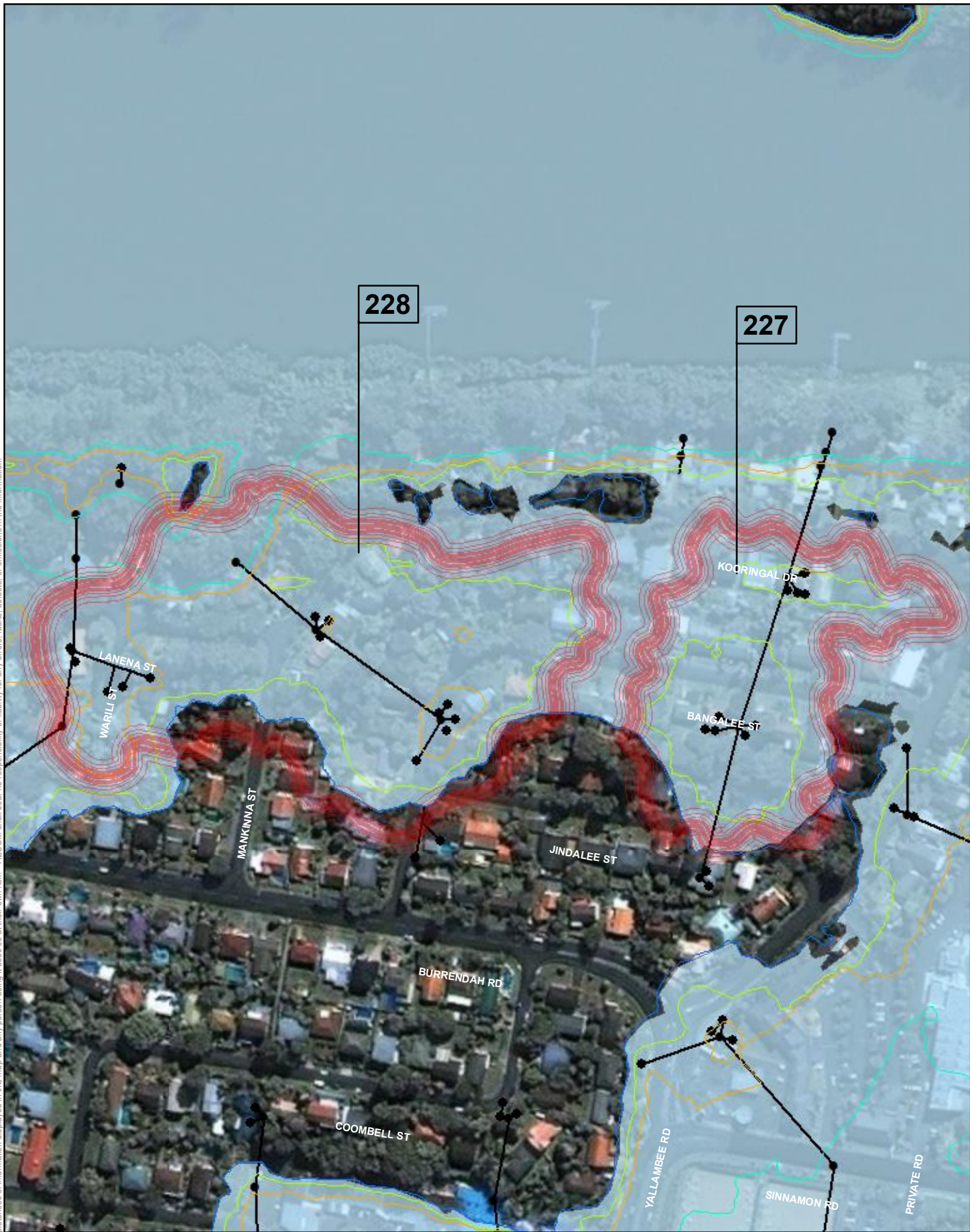
Data sources:
Base Data: (c) 2011 All data derived from BCC.

60238108
BCC
Victoria Ave,
Chelmer

PROJECT ID 60238108
CREATED BY KLB
LAST MODIFIED KLB - 5 MAR 2012
VERSION: V01

Map
226

AECOM does not warrant the accuracy or completeness of information displayed in this map and any person using it does so at their own risk. AECOM shall bear no responsibility or liability for any errors, faults, defects, or omissions in the information.



AECOM
www.aecom.com

DATUM GDA 1994, PROJECTION MGA ZONE 56
0 20 40 80
metres
1:2,650 (when printed at A4)

LEGEND

- Stormwater Device
- Stormwater Pipe
- 227 & 228 Backflow Contours
- Q20
- Q50
- Q100
- 2011

January 2011

Proposed Backflow Management Area

Data sources:
Base Data: (c) 2011 All data derived from BCC.

60238108
BCC
Bangalee Street,
Koorringal Drive, Jindalee

PROJECT ID 60238108
CREATED BY KLB
LAST MODIFIED KLB - 5 MAR 2012
VERSION: V01

Map
227
228

AECOM does not warrant the accuracy or completeness of information displayed in this map and any person using it does so at their own risk. AECOM shall bear no responsibility or liability for any errors, faults, defects, or omissions in the information.



AECOM
www.aecom.com

DATUM GDA 1994, PROJECTION MGA ZONE 56

0 10 20 40
metres

1:1,200 (when printed at A4)

LEGEND

- Stormwater Device
- Stormwater Pipe
- 229 Backflow Contour**
- 2011
- January 2011
- Proposed Backflow Management Area

Data sources:
Base Data: (c) 2011 All data derived from BCC.

60238108
BCC
Willeen Court
Mount Crosby

PROJECT ID 60238108
CREATED BY KLB
LAST MODIFIED KLB - 5 MAR 2012
VERSION: V01

Map

229

AECOM does not warrant the accuracy or completeness of information displayed in this map and any person using it does so at their own risk. AECOM shall bear no responsibility or liability for any errors, faults, defects, or omissions in the information.



AECOM
www.aecom.com

DATUM GDA 1994, PROJECTION MGA ZONE 56

0 40 80 160

metres

1:4,400 (when printed at A4)

LEGEND

- Stormwater Device
- Stormwater Pipe
- Q20
- Q50
- Q100
- 2011
- January 2011
- Proposed Backflow Management Area

Data sources:
Base Data: (c) 2011 All data derived from BCC.

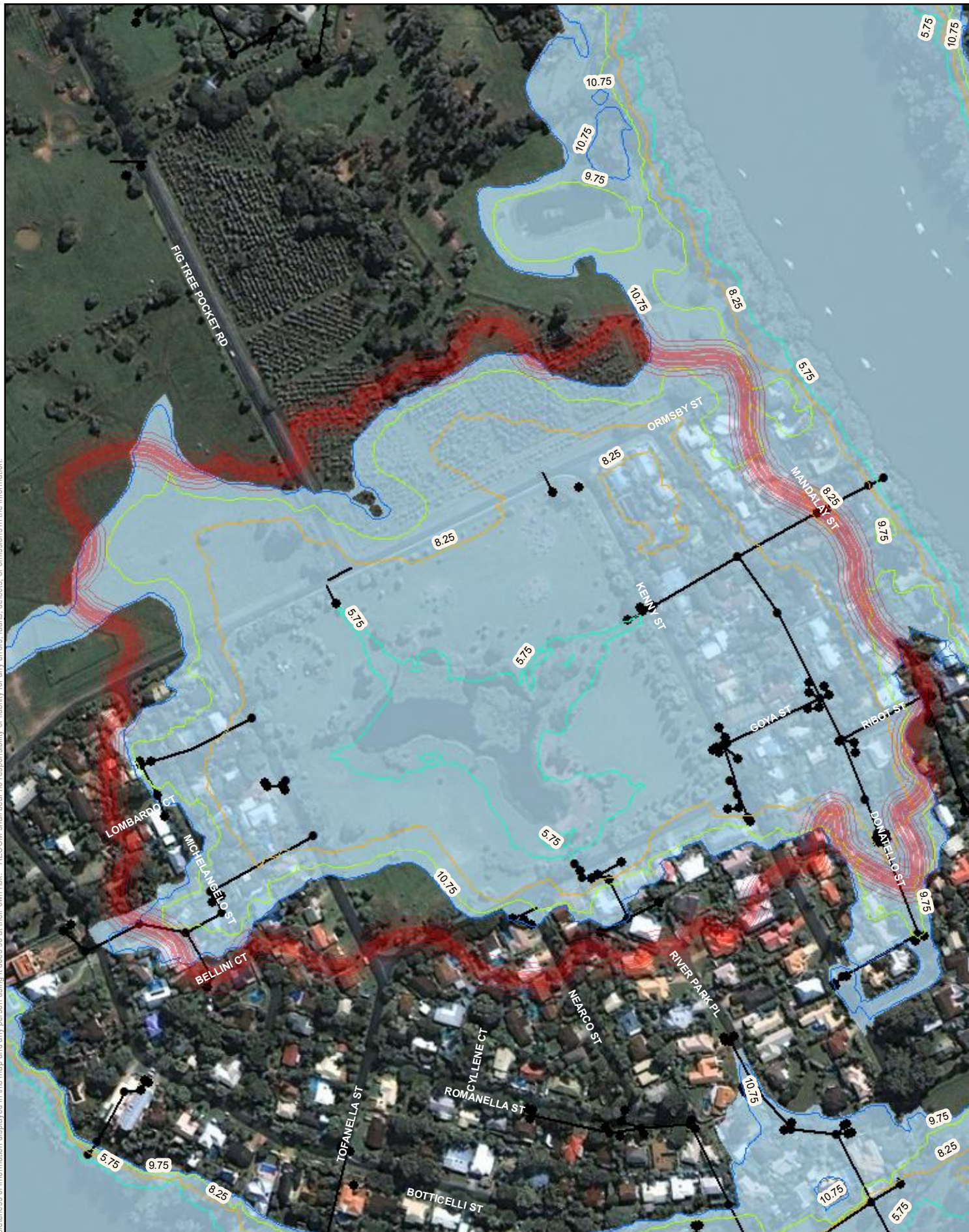
60238108
BCC
Sellars St, Atkinson Drive
Karana Downs

PROJECT ID 60238108
CREATED BY KLB
LAST MODIFIED KLB - 5 MAR 2012
VERSION: V01

Map
231
232

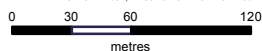
A4 size

AECOM does not warrant the accuracy or completeness of information displayed in this map and any person using it does so at their own risk. AECOM shall bear no responsibility or liability for any errors, faults, defects, or omissions in the information.



AECOM
www.aecom.com

DATUM GDA 1994, PROJECTION MGA ZONE 56



1:3,800 (when printed at A4)

LEGEND

- Stormwater Device
- Stormwater Pipe
- Proposed Backflow Management Area
- 233 Backflow Contours
- Q20
- Q50
- Q100
- 2011

January 2011

60238108
BCC
Kenny St,
Fig Tree Pocket

PROJECT ID 60238108
CREATED BY KLB
LAST MODIFIED KLB - 5 MAR 2012
VERSION: V01

Map
233

Data sources:
Base Data: (c) 2011 All data derived from BCC.

AECOM does not warrant the accuracy or completeness of information displayed in this map and any person using it does so at their own risk. AECOM shall bear no responsibility or liability for any errors, faults, defects, or omissions in the information.



AECOM
www.aecom.com

DATUM GDA 1994, PROJECTION MGA ZONE 56
0 10 20 40
metres
1:1,299 (when printed at A4)

LEGEND

- Stormwater Device
- Stormwater Pipe
- 234 Backflow Contours
- Q20
- Q50
- Q100
- 2011
- January 2011
- Proposed Backflow Management Area

Data sources:
Base Data: (c) 2011 All data derived from BCC.

60238108
BCC
Douglas St, St Lucia

PROJECT ID 60238108
CREATED BY KLB
LAST MODIFIED KLB - 5 MAR 2012
VERSION: V01

Map
234

AECOM does not warrant the accuracy or completeness of information displayed in this map and any person using it does so at their own risk. AECOM shall bear no responsibility or liability for any errors, faults, defects, or omissions in the information.



AECOM
www.aecom.com

DATUM GDA 1994, PROJECTION MGA, ZONE 56

0 5 10 20

metres

1:900

(when printed at A4)

LEGEND

- Stormwater Device
- Stormwater Pipe
- 236 Backflow Contours
- Q20
- Q50
- Q100
- 2011
- January 2011
- Proposed Backflow Management Area

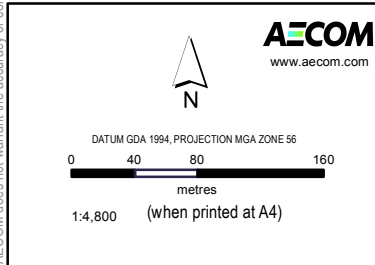
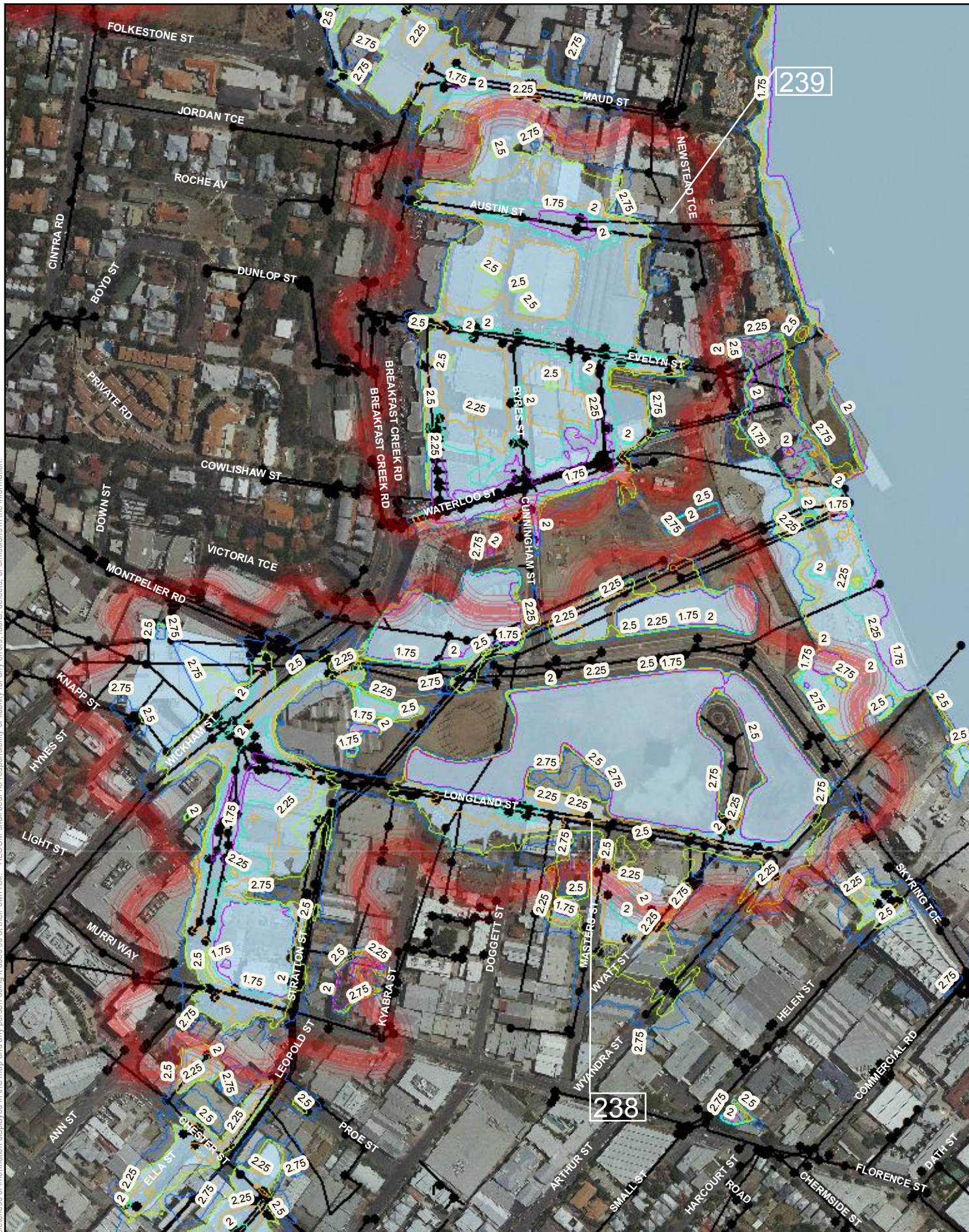
Data sources:
Base Data: (c) 2011 All data derived from BCC.

60238108
BCC
Herbert St, Toowong

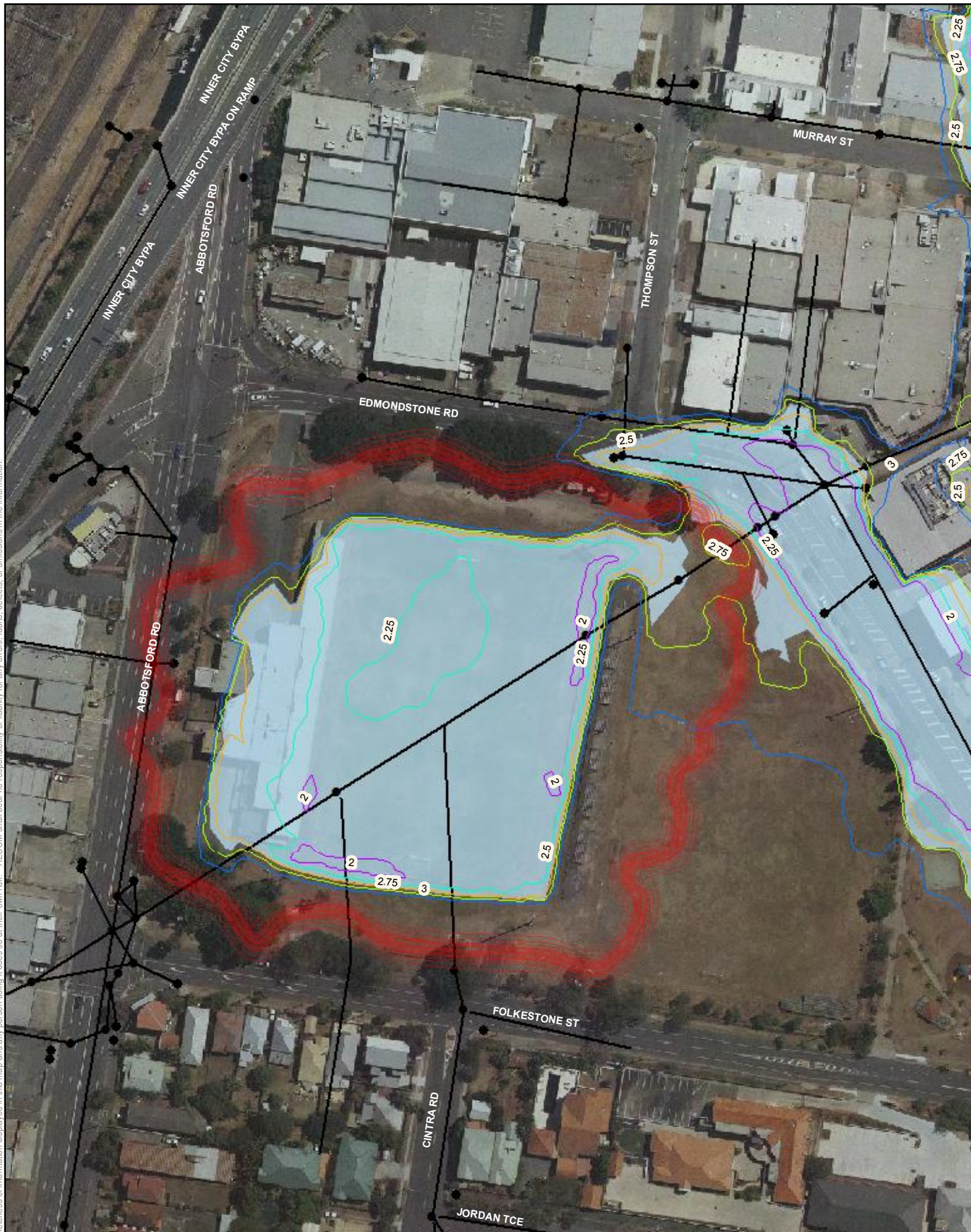
PROJECT ID 60238108
CREATED BY KLB
LAST MODIFIED KLB - 05 MAR 2012
VERSION: V01

Map
236

AECOM does not warrant the accuracy or completeness of information displayed in this map and any person using it does so at their own risk. AECOM shall bear no responsibility or liability for any errors, faults, defects, or omissions in the information.



AECOM does not warrant the accuracy or completeness of information displayed in this map and any person using it does so at their own risk. AECOM shall bear no responsibility or liability for any errors, faults, defects, or omissions in the information.



AECOM
www.aecom.com

DATUM GDA 1994, PROJECTION MGA ZONE 56

0 15 30 60
metres

1:1,700 (when printed at A4)

LEGEND

- Stormwater Device
- Stormwater Pipe
- Proposed Backflow Management Area
- 240 Backflow Contours**
- Q5
- Q20
- Q50
- Q100
- 2011

Data sources:
Base Data: (c) 2011 All data derived from BCC.

60238108
BCC
Edmondstone road,
Bowen Hills

PROJECT ID 60238108
CREATED BY KLB
LAST MODIFIED KLB - 5 MAR 2012
VERSION: V01

Map
240

AECOM does not warrant the accuracy or completeness of information displayed in this map and any person using it does so at their own risk. AECOM shall bear no responsibility or liability for any errors, faults, defects, or omissions in the information.



AECOM
www.aecom.com

DATUM GDA 1994, PROJECTION MGA ZONE 56

0 20 40 80

metres

1:2,100 (when printed at A4)

LEGEND

- Stormwater Device
- Stormwater Pipe
- 127 Backflow Contours
- Q5
- Q20
- Q50
- 2011
- Q100
- January 2011
- Proposed Backflow Management Area

Data sources:
Base Data: (c) 2011 All data derived from BCC.

60238108
BCC
Butterfield St
Herston

PROJECT ID 60238108
CREATED BY KLB
LAST MODIFIED KLB - 5 MAR 2012
VERSION: V01

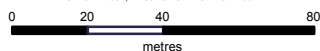
Map
241

AECOM does not warrant the accuracy or completeness of information displayed in this map and any person using it does so at their own risk. AECOM shall bear no responsibility or liability for any errors, faults, defects, or omissions in the information.



AECOM
www.aecom.com

DATUM GDA 1994, PROJECTION MGA ZONE 56



1:2,000 (when printed at A4)

LEGEND

- Stormwater Device
- Stormwater Pipe
- 242 Backflow Contours
- Q5
- Q20
- Q50
- 2011
- Q100
- January 2011
- Proposed Backflow Management Area

Data sources:
Base Data: (c) 2011 All data derived from BCC.

60238108
BCC
Montague Road, West End

PROJECT ID 60238108
CREATED BY KLB
LAST MODIFIED KLB - 5 MAR 2012
VERSION: V01

Map
242

AECOM does not warrant the accuracy or completeness of information displayed in this map and any person using it does so at their own risk. AECOM shall bear no responsibility or liability for any errors, faults, defects, or omissions in the information.



DATUM GDA 1994, PROJECTION MGA ZONE 56
0 30 60 120
metres
1:3,200 (when printed at A4)

AECOM
www.aecom.com

LEGEND

- Stormwater Device
- Stormwater Pipe
- Proposed Backflow Management Area
- 247 Backflow Contours**
- Q5
- Q20
- Q50
- 2011
- Q100

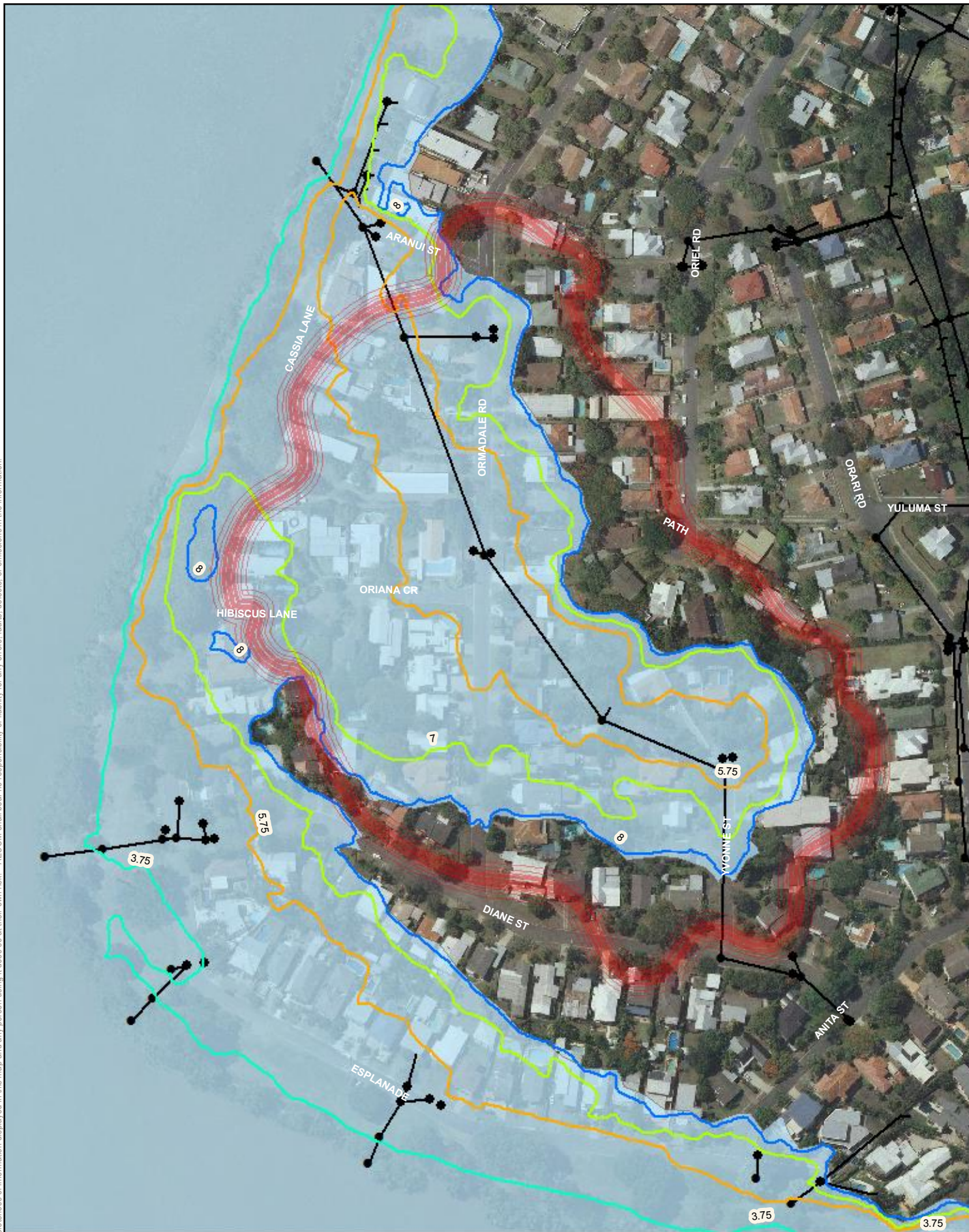
Data sources:
Base Data: (c) 2011 All data derived from BCC.

60238108
BCC
Eagleview Place,
Eagle Farm

PROJECT ID 60238108
CREATED BY KLB
LAST MODIFIED KLB - 5 MAR 2012
VERSION: V01

Map
247

AECOM does not warrant the accuracy or completeness of information displayed in this map and any person using it does so at their own risk. AECOM shall bear no responsibility or liability for any errors, faults, defects, or omissions in the information.



AECOM
www.aecom.com

DATUM GDA 1994, PROJECTION MGA ZONE 56
0 20 40 80
metres
1:2,400 (when printed at A4)

LEGEND

- Stormwater Device
- Stormwater Pipe
- 249 Backflow Contours
- Q20
- Q50
- Q100
- 2011
- January 2011
- Proposed Backflow Management Area

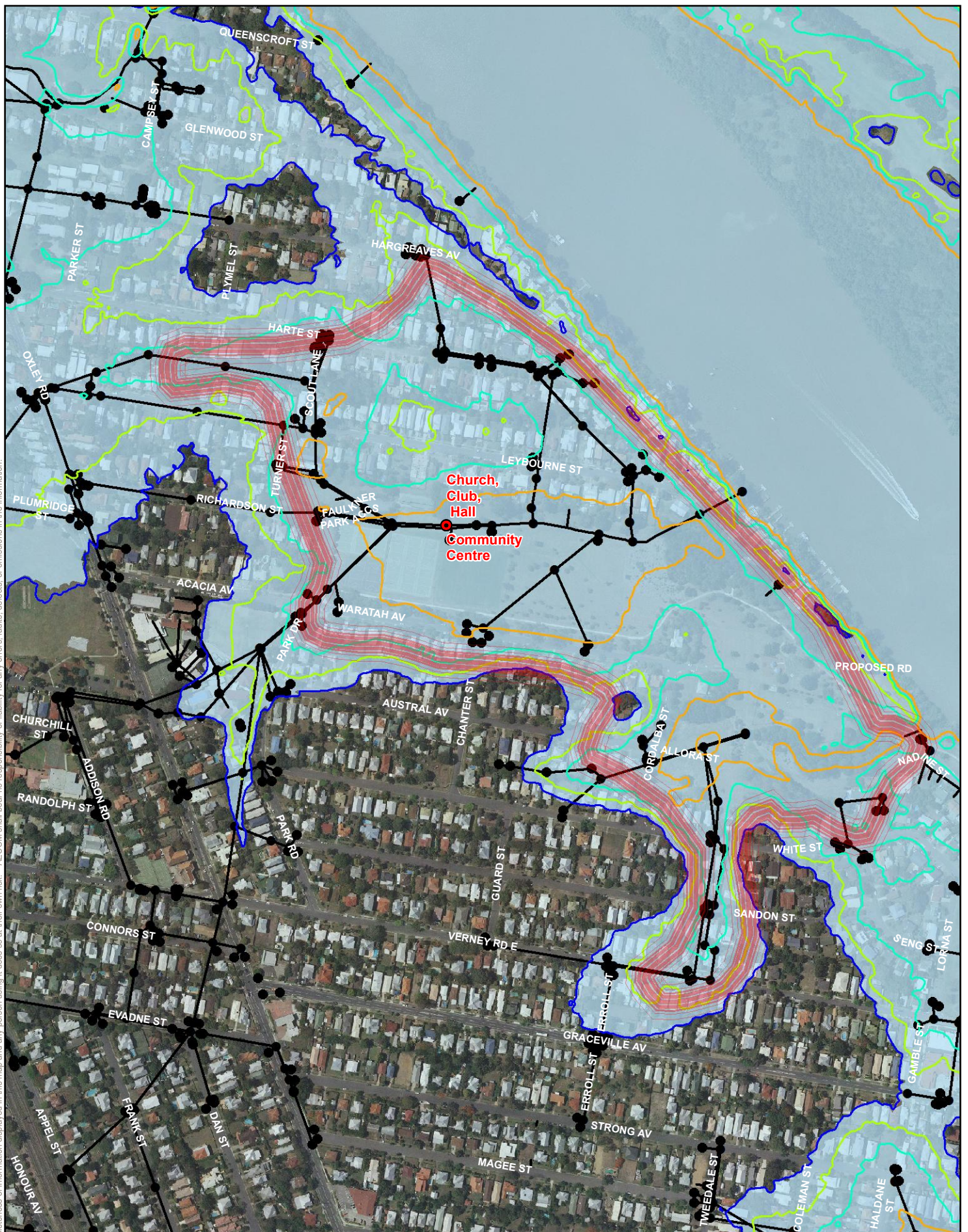
60238108
BCC
Onmadale St, Yeronga

PROJECT ID 60238108
CREATED BY KLB
LAST MODIFIED KLB - 1 MAR 2012
VERSION: V01

Map
249

Data sources:
Base Data: (c) 2011 All data derived from BCC.

AECOM does not warrant the accuracy or completeness of information displayed in this map and any person using it does so at their own risk. AECOM shall bear no responsibility or liability for any errors, faults, defects, or omissions in the information.



AECOM
www.aecom.com



DATUM GDA 1994, PROJECTION MGA ZONE 56

0 60 120 240
metres

1:5,750 (when printed at A4)

LEGEND

- Critical Infrastructure
- Stormwater Device
- Stormwater Pipe

251 Backflow Contours

- Q50
- Q20
- Q100
- 2011

January 2011

Proposed Backflow Management Area

Data sources:

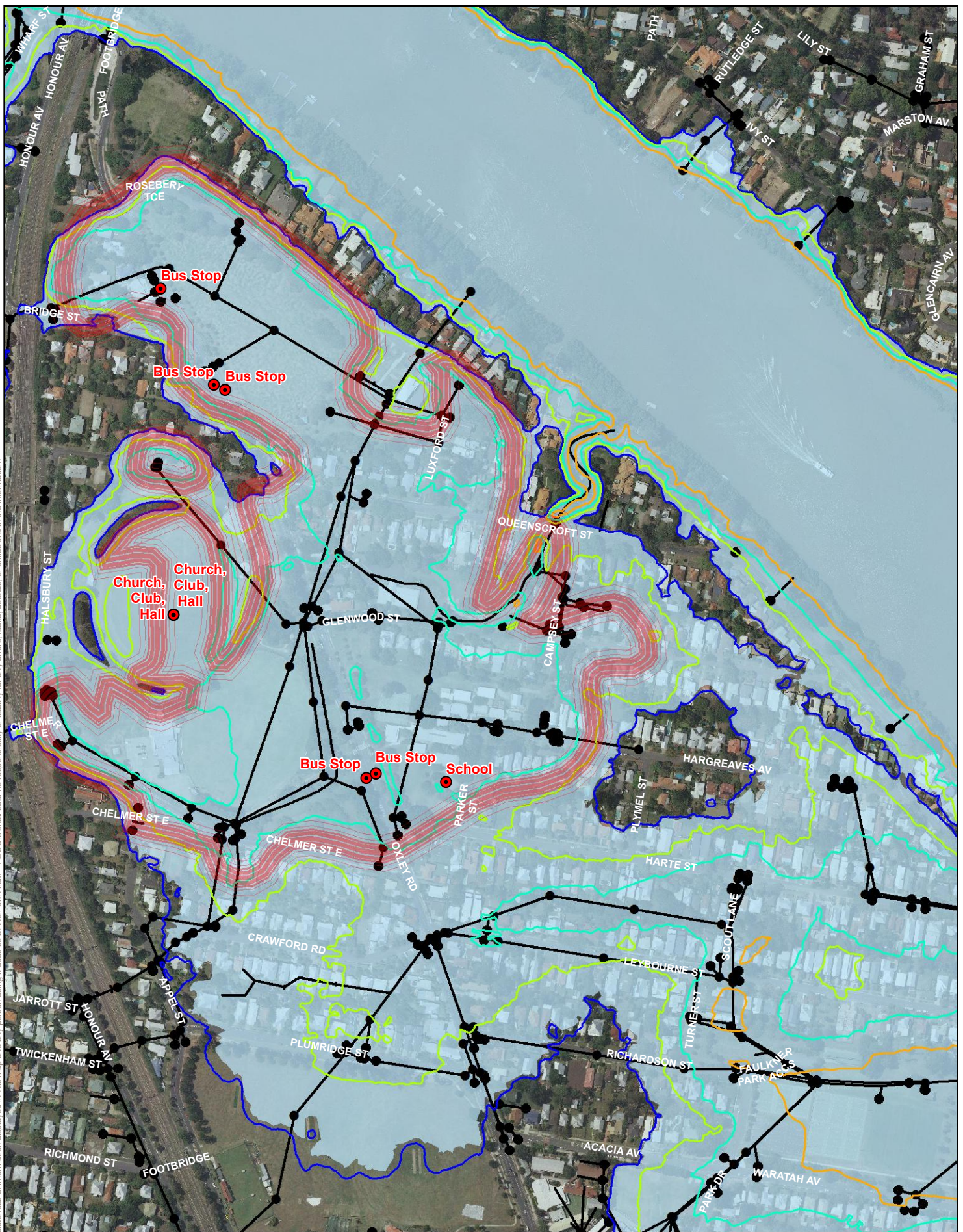
Base Data: (c) 2011 All data derived from BCC.

60238108
BCC
Leybourne St,
Chelmer

PROJECT ID 60238108
CREATED BY KLB
LAST MODIFIED BN - 30 APR 2012
VERSION: V01

Map
251

AECOM does not warrant the accuracy or completeness of information displayed in this map and any person using it does so at their own risk. AECOM shall bear no responsibility or liability for any errors, faults, defects, or omissions in the information.



AECOM
www.aecom.com



DATUM GDA 1994, PROJECTION MGA ZONE 56

0 55 110 220

metres

1:5,250 (when printed at A4)

LEGEND

- Critical Infrastructure
- Stormwater Device
- Stormwater Pipe
- 252 Backflow Contours**
- Q50
- Q20
- Q100
- 2011

January 2011

Proposed Backflow Management Area

Data sources:

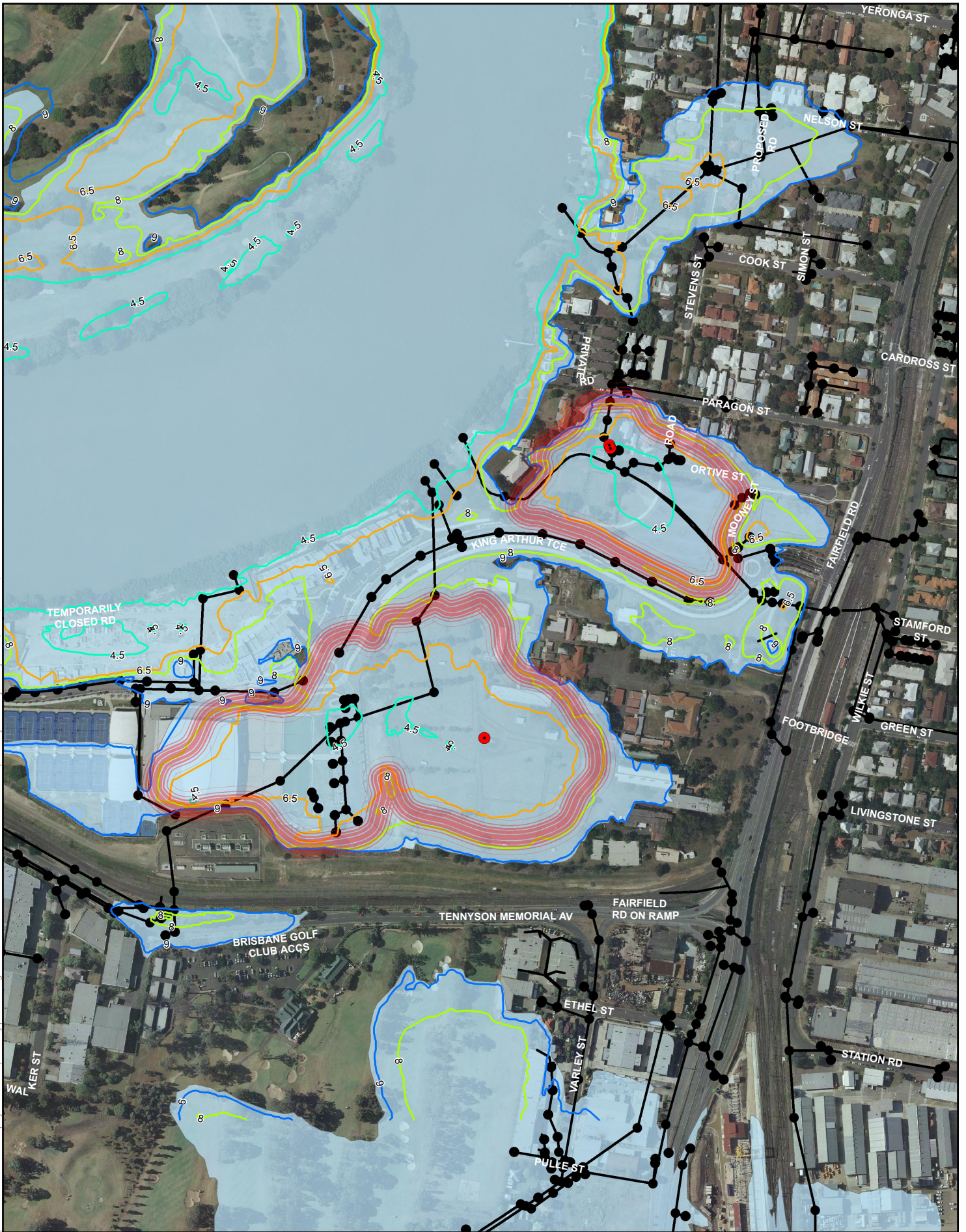
Base Date: (c) 2011 All data derived from BCC.

60238108
BCC
Leybourne St,
Chelmer

PROJECT ID 60238108
CREATED BY KLB
LAST MODIFIED BN - 30 APR 2012
VERSION: V01

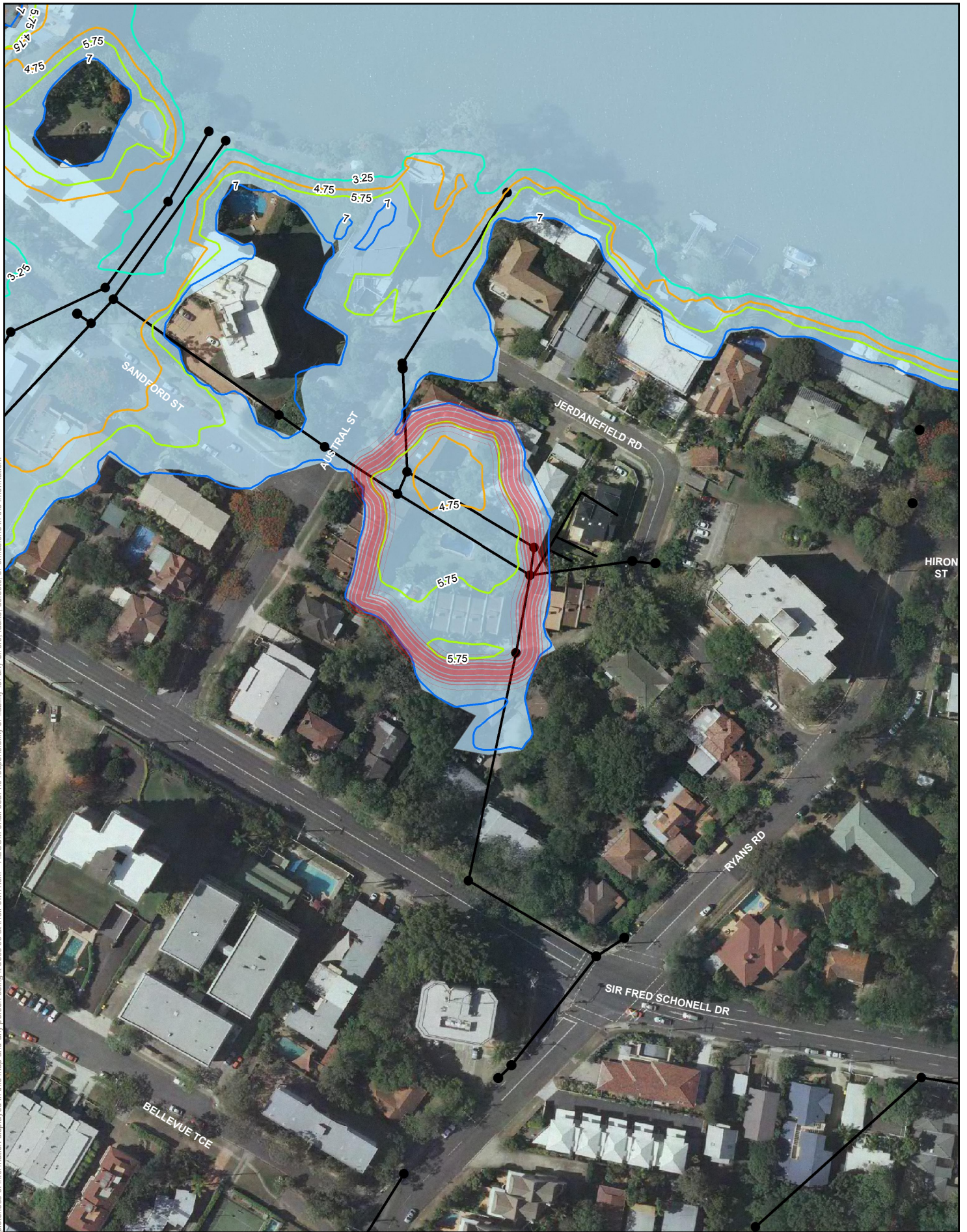
Map
252

AECOM does not warrant the accuracy or completeness of information displayed in this map and any person using it does so at their own risk. AECOM shall bear no responsibility or liability for any errors, faults, defects, or omissions in the information.



 DATUM GDA 1994, PROJECTION MGA ZONE 56 0 50 100 200 metres 1:5,000 (when printed at A4)	AECOM www.aecom.com	LEGEND <ul style="list-style-type: none">● Critical Infrastructure (sewer)253-4 Tenn_Yeronga253/254 Backflow Contours<ul style="list-style-type: none">Q20Q50Q1002011● Stormwater Device— Stormwater PipeJanuary 2011Proposed Backflow Management Area	60238108 BCC King Arthur Tce, Tennyson Ortive St, Yeronga
	<p>PROJECT ID: 60238108 CREATED BY: KLB LAST MODIFIED: BC - 10 MAY 2012 VERSION: A</p> <p>Data sources: Base Data: (c) 2011 All data derived from BCC.</p>	<p>Map 253 254</p>	

AECOM does not warrant the accuracy or completeness of information displayed in this map and any person using it does so at their own risk. AECOM shall bear no responsibility or liability for any errors, faults, defects, or omissions in the information.



AECOM
www.aecom.com



DATUM GDA 1994, PROJECTION MGA ZONE 56

0 10 20 40
metres

1:1,500 (when printed at A4)

LEGEND

● Critical Infrastructure (sewer)

255 Backflow Contours

Q20

Q50

Q100

2011

● Stormwater Device

— Stormwater Pipe

January 2011

Proposed Backflow Management Area

Data sources:

Base Data: (c) 2011 All data derived from BCC.

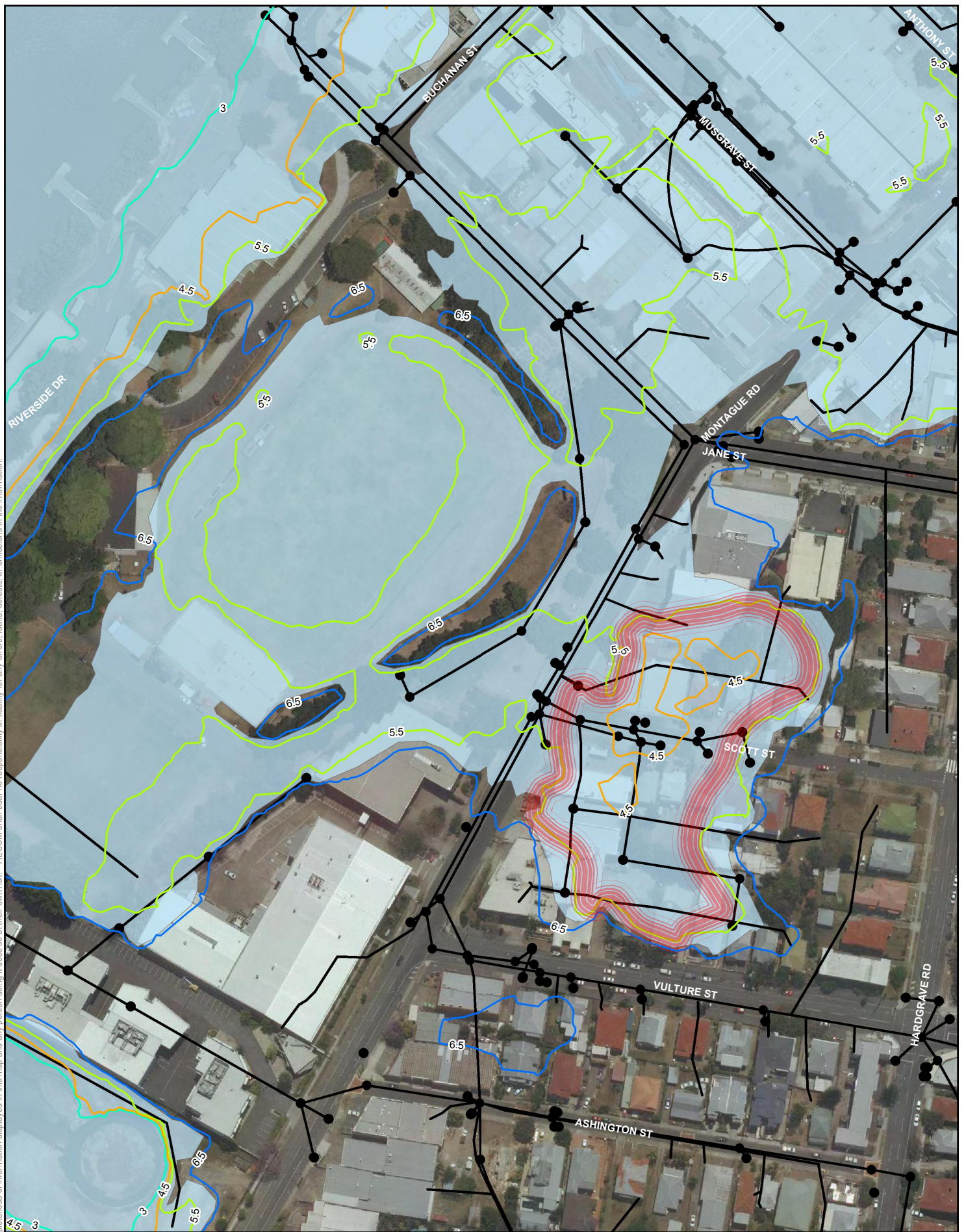
60238108
BCC
Jerdanefield Rd, St Lucia



PROJECT ID 60238108
CREATED BY KLB
LAST MODIFIED BC - 10 MAY 2012
VERSION: A

Map

255

AECOM does not warrant the accuracy or completeness of information displayed in this map and any person using it does so at their own risk. AECOM shall bear no responsibility or liability for any errors, faults, defects, or omissions in the information.



 www.aecom.com	LEGEND	60238108 BCC Vulture St, West End								
	<ul style="list-style-type: none">● Critical Infrastructure (sewer)256 Backflow ContoursQ20Q50Q1002011● Stormwater Device— Stormwater Pipe	<ul style="list-style-type: none">January 2011Proposed Backflow Management Area	<table border="1"><tr><td>PROJECT ID</td><td>60238108</td></tr><tr><td>CREATED BY</td><td>KLB</td></tr><tr><td>LAST MODIFIED</td><td>BC - 10 MAY 2012</td></tr><tr><td>VERSION:</td><td>A</td></tr></table>	PROJECT ID	60238108	CREATED BY	KLB	LAST MODIFIED	BC - 10 MAY 2012	VERSION:
PROJECT ID	60238108									
CREATED BY	KLB									
LAST MODIFIED	BC - 10 MAY 2012									
VERSION:	A									
 DATUM GDA 1994, PROJECTION MGA ZONE 56 0 20 40 80 metres 1:2,000 (when printed at A4)		Map 256								